

# ALPINE RAGER

TM



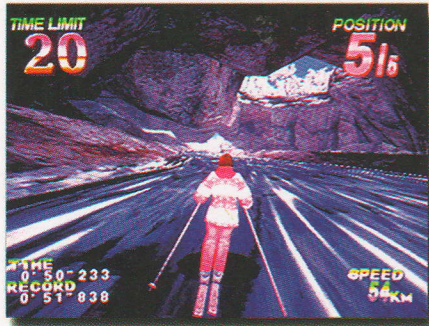
Double the pleasure...  
Double the DROP!!!!

**namco**<sup>®</sup>

©1996, Namco Ltd., All rights reserved.

# ALPINE RACER 2™

The crisp Super System 22, 3-D graphics are the finest in the industry.



Durable controls and state-of-the-art cabinetry keep the game looking good play after play.

The view change feature adds depth to the exhilarating game play.

The sequel to the award winning Alpine Racer snowballs the competition.

The THREE character choices have unlimited appeal.



## New Courses:


- High speed
- Technical

Both courses offer:

## Two Game Modes:

- Downhill Racing
- Gate Racing

Single Unit Specifications:  
 Installed Dimensions: 7'9"H x 4'1.5"W x 7'6" D  
 Weight: 1,320 lbs.  
 Power Consumption: 960 watts

 UL Approved.

Import model shown.  
 Specifications subject to change without notice.

Namco America Inc.  
 Sales Office  
 877 Supreme Drive  
 Bensenville, IL. 60106  
 Phone: (630) 238-2248  
 Fax: (630) 238-9333

Namco America Inc.  
 150 Charcot Avenue  
 San Jose, CA. 95131  
 Phone: (408) 383-3900  
 Fax: (408) 383-0128

**namco**®

©1996, Namco Ltd., All rights reserved.