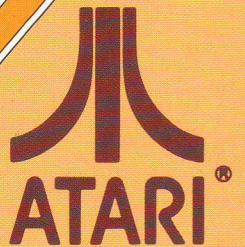


AVALANCHE™



- New 1 or 2 player skill challenge.
- Optional extended bonus play.
- Players "catch" falling "rocks".
- Optional English, French, German or Spanish video messages.
- Operator-selectable to 3 or 5 "heats".
- Built-in self-test program.



A Warner Communications Company

AVALANCHE™

Avalanche™ is an all new competitive video challenge for 1 or 2 players. Play action is innovative and exciting, designed to keep players coming back again and again to achieve higher individual scores or to win against an opponent.

The object of the game is to "catch" avalanching "rocks" with a controllable set of "paddles" that diminish in number and size as the rocks fall faster and faster. When a rock falls through to the bottom line, the heat is over. If all the rocks are caught, another set appears, but the player starts with less paddles.

Realistic sound effects and color stripes on the monitor add to the excitement and attraction appeal.

And players can play Avalanche indefinitely — as long as they don't miss!

That means extra replay, extra profits!

Exclusive Operator Options.

Number of Heats. Operator-adjustable to 3 or 5 heats per play

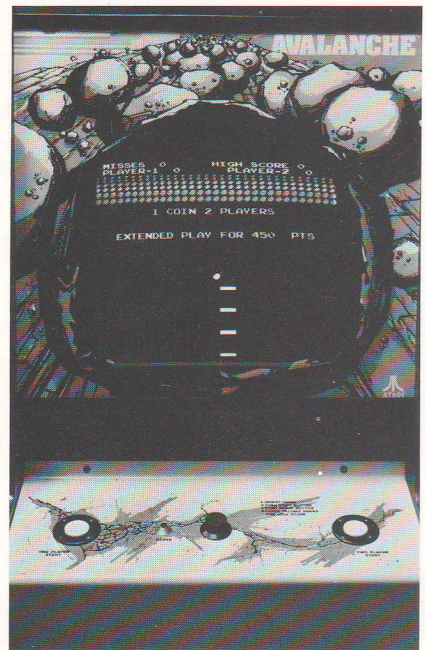
Extended Play. Optional extended play can be awarded for 450 points in a 3 heat game or 750 points in a 5 heat game. An entire 3 or 5 heat game is awarded if player achieves the Extended Play mode.

Coinage. Can be set at 1 or 2 coins per play, 1 coin for 2 plays or free play.

Four Languages. Operators may select English, French, German or Spanish video message presentations.

Built-in reliability for longer earnings.

Added to our thorough distributor and factory service support, Avalanche has Atari's built-in self-test diagnostic system that displays all microprocessor



and memory functions including switches and options. On-the-spot maintenance for longer location life.

Telehelp™ to the rescue.

A new name that means a direct toll-free telephone line to our Customer Service Department for instant service help.

Dimensions.

Height: 66", 168 cm;

Width: 26", 66 cm;

Depth: 27", 68 cm;

Monitor Size: 23" B/W

Look out for falling quarters!

Check in with your local Atari distributor now or contact us for referral at Atari Inc., 1265 Borregas Ave., Sunnyvale, CA 94086. (408) 745-2500.

Distributed by


ATARI®

 A Warner Communications Company