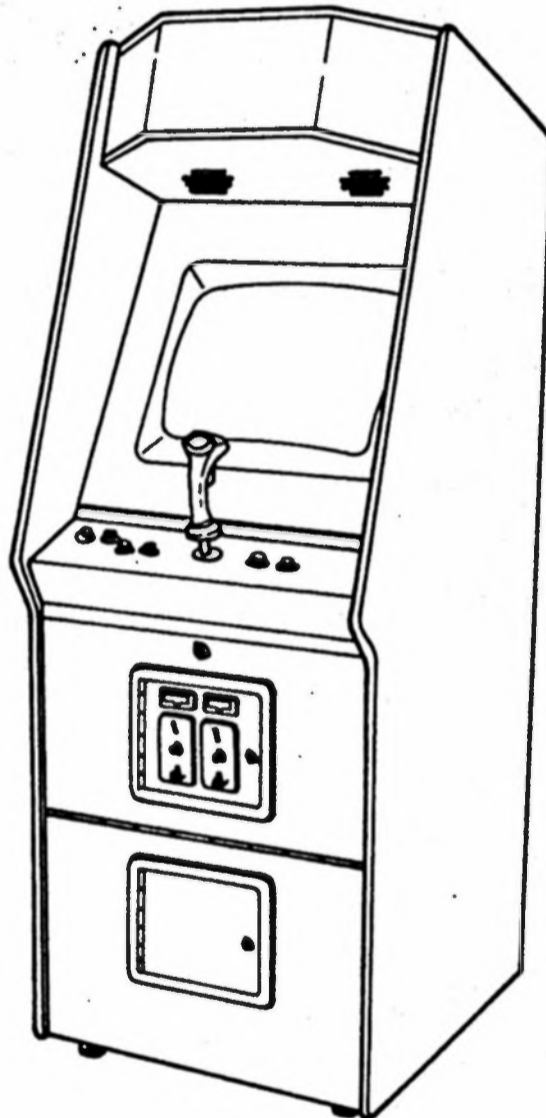


LASER GAME

INSTRUCTIONS



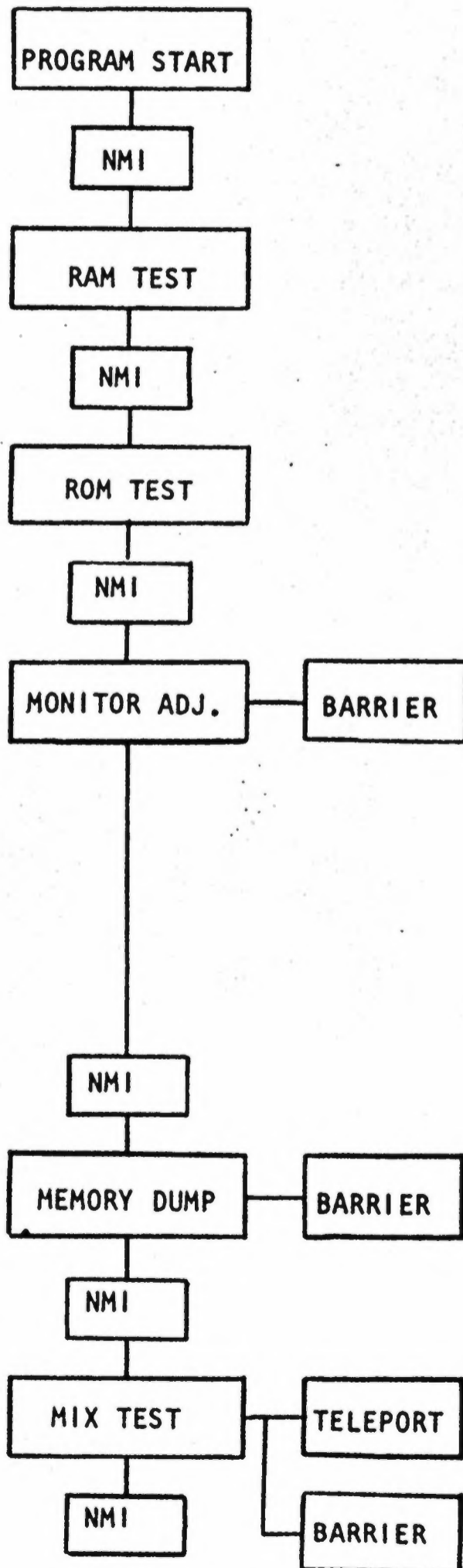
DATA EAST USA, INC.

470 Gianni Street, Santa Clara, CA 95050
Telephone: (408) 727-4490
Toll Free: (800) 538-5129
Telex: 172163 DATA EAST SNTA

DIAGNOSTIC PROGRAM

1. Turn the machine OFF before activating the Diagnostic program.
2. To activate the test mode, position 8 of dip switch block 2 MUST be in the ON position.
3. Turn the machine back on.
4. To step the program forward, the NMI switch must be pressed. (the NMI switch is the same as the service switch)
5. To repeat any test, the Teleport button MUST be DEPRESSED while the NMI switch is pressed.

FLOW CHART

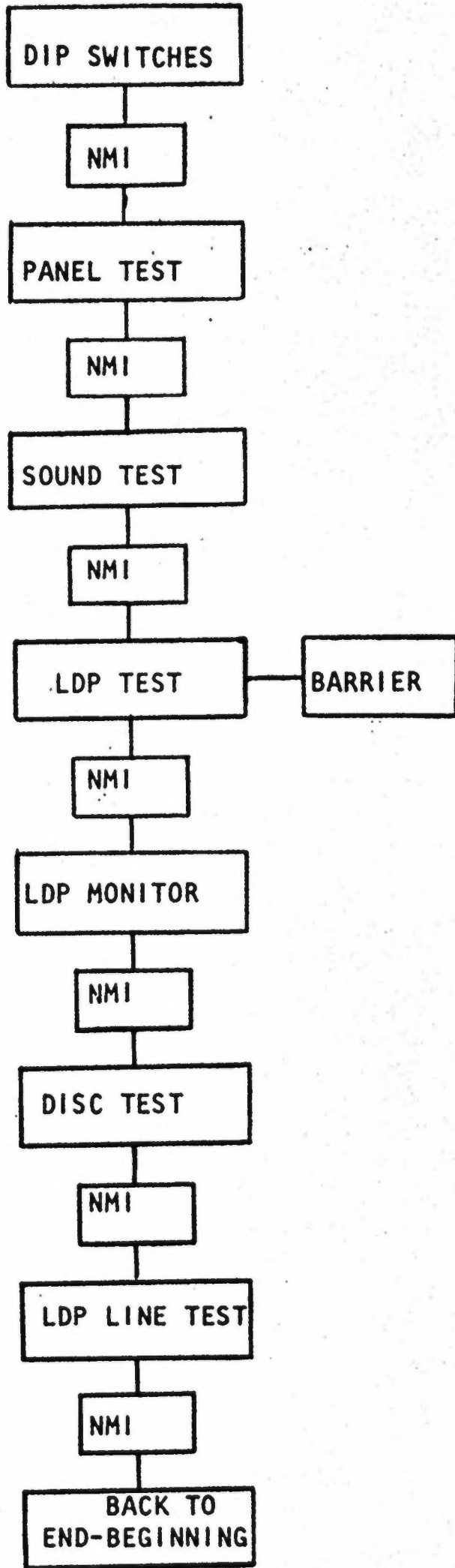


- | | |
|-----------------|------------------------------------|
| 1. RED BARS | 9. R G B COLOR BARS |
| 2. GREEN BARS | 10. R G B COLOR BARS $\frac{1}{2}$ |
| 3. BLUE BARS | 11. BLACK REFERENCE |
| 4. WHITE SCREEN | 12. COLOR BAR |
| 5. BLUE BORDER | 13. RED BARS |
| 6. R G B BLOCKS | 14. GREEN BARS |
| 7. CROSS HATCH | 15. BLUE BARS |
| 8. CHARACTERS | 16. GRAY REFERENCE BARS |

1. SCREEN #1
2. SCREEN #2

1. MIX/BLACK BACKGROUND

1. MIX/BLACK REFERENCE



- 1. PLAY
- 2. FAST FORWARD
- 3. FOWARD SLOW
- 4. FORWARD STEP
- 5. STILL

- 6. REVERSE PLAY
- 7. REVERSE FAST
- 8. REVERSE SLOW
- 9. REVERSE STEP
- 10. STILL

OPTION SWITCH SETTINGS

The following are DIP Switch settings:

DIP SWITCH I

NO.					
1	OFF	OFF	ON	ON	RIGHT COIN SELECTOR
2	OFF	ON	OFF	ON	
COIN	1	1	3	2	
PLAY	1	2	1	1	
3	OFF	OFF	ON	ON	LEFT COIN SELECTOR
4	OFF	ON	OFF	ON	
COIN	1	1	3	2	
PLAY	1	2	1	1	
5	NOT USED				
6					
7					
8					

DIP SWITCH II

NO.					
1	OFF	OFF	ON	ON	NO. BEGA'S PER CREDIT
2	OFF	ON	OFF	ON	
#Begas	3	4	5	6	
3	OFF		ON		CONTINUOUS PLAY MODE
	NO		YES		
4	OFF		ON	ON	BONUS BEGA GAINED AT
5	OFF	ON	OFF	ON	
BONUS	20,000	30,000	50,000	NO BONUS, CONTINUOUS FIRE	
6	OFF		ON		
	EASY		DIFFICULT		
7	OFF		ON		
	COCKPIT		UPRIGHT		
8	OFF		ON		DIAGNOSTIC MODE
	PLAY		DIAG.		

LAY
AST
LOW
TEP