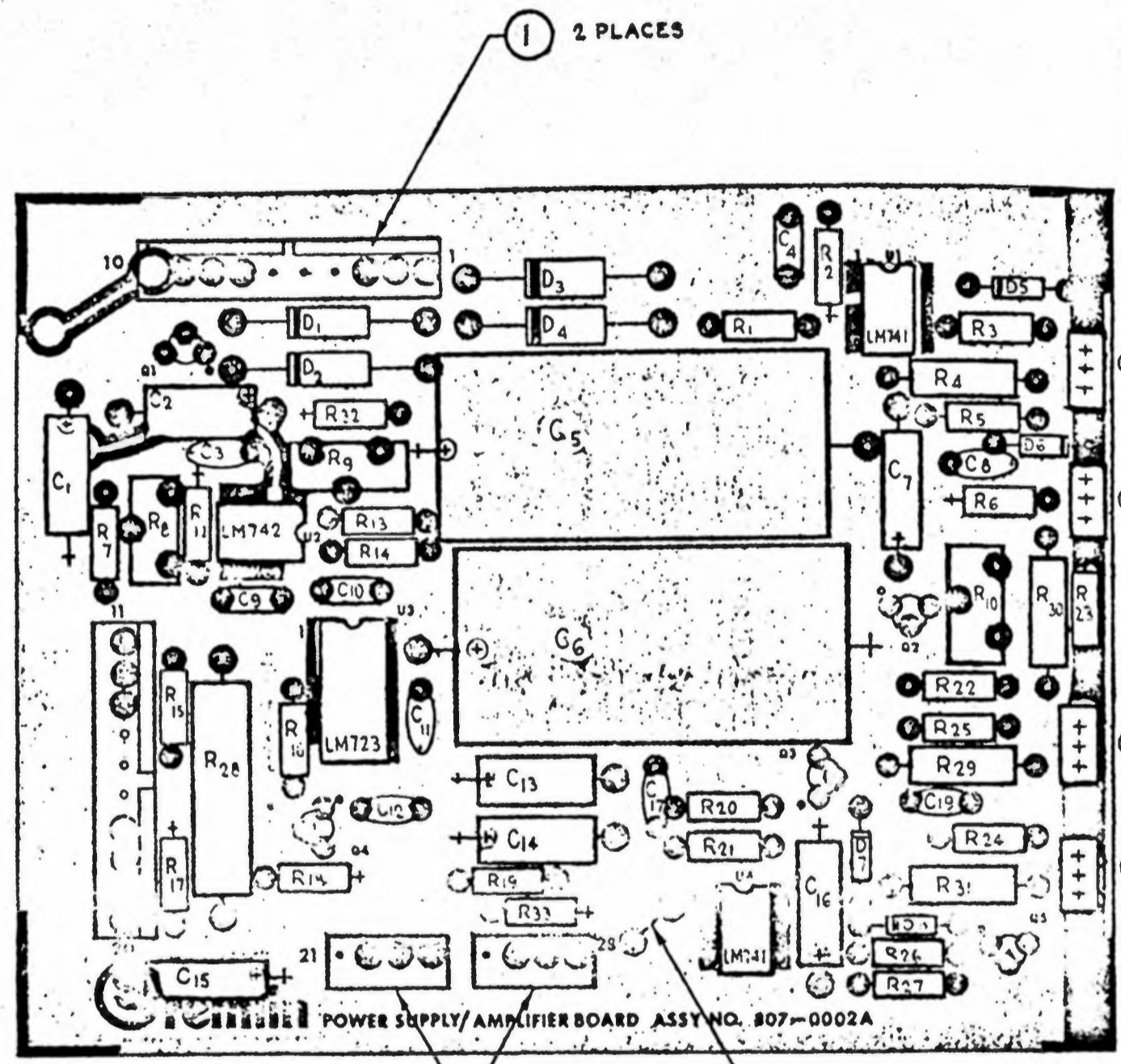


REVISIONS				
ZONE	LTR	DESCRIPTION	DATE	APPROV.

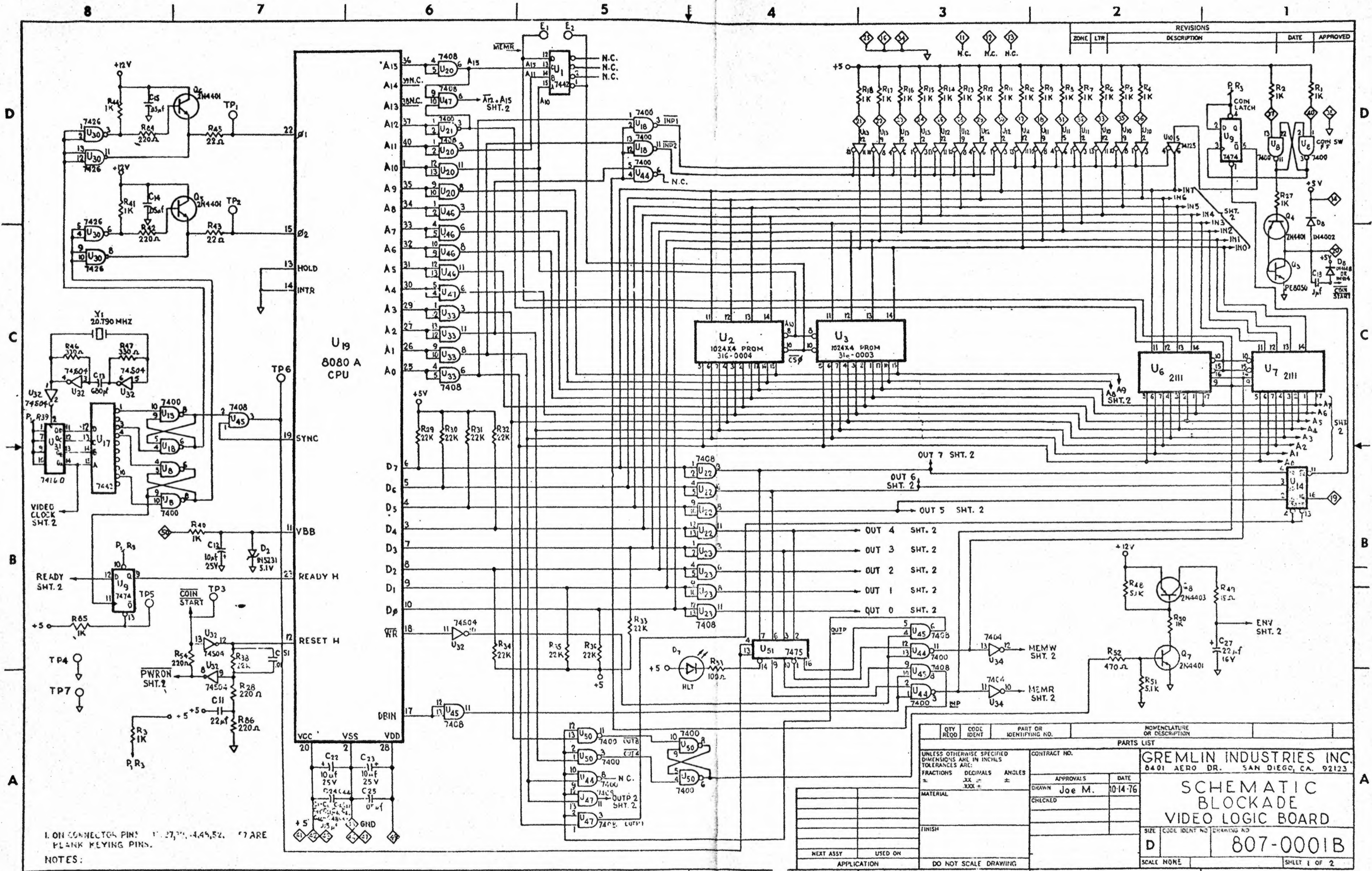


ITEM NO.	QTY	PART OR IDENTIFYING NO.	NOMENCLATURE OR DESCRIPTION
2	2	212-0004	CONN. MALE 4 PIN
1	2	212-0003	CONN. MALE 10 PIN
P.C.B. 1	1	170-0058A	P.C. BOARD
Q2 Q3	2	482-0016	XISTOR TIP 29
Q7	1	482-0015	XISTOR TIP 115
Q6	1	482-0013	XISTOR TIP 110
Q2 Q3	2	482-0014	XISTOR 2N4401
Q2 Q3 Q4	3	482-0006	XISTOR 2N4403
D7 D8	2	481-0006	DIODE 1N914 OR 1N4148
D5 D6	2	481-0008	DIODE ZENER 1N5231
D1 D4	4	481-0004	DIODE MR 501
C19	1	151-0002	CAP. CER. 100 P 50 V
C16 C17	2	151-0009	CAP. CER. .001 M 50 V
C5 C11	2	151-0001	CAP. CER. .05 M 50 V
C5 C6	2	150-0019	CAP. E. 4700 M 25 V
C4 C9 C12	3	151-0011	CAP. CER. .01 M 50 V
C3	1	151-0012	CAP. CER. .1 M 50 V
C1 C2 C7 C13 C14 C16	7	150-0004	CAP. E. 10 M 25 V
R9	1	475-0004	POT. 1 K TRIMMER
R8 R10	2	475-0005	POT. 2 K TRIMMER
R28	1	473-0081	RES. .1 OHM 5 W 3%
R10	1	471-0821	RES. .820 OHM 1/2 W 5%
R14 R18 R27	3	471-0101	RES. 100 OHM 1/2 W 5%
R4 R29-R31	4	472-0085	RES. .05 OHM 1 W 5%
R33	1	471-0104	RES. 100 K OHM 1/2 W 5%
R32	1	471-0332	RES. 33 K OHM 1/2 W 5%
R14 R21	2	471-0103	RES. 10 K OHM 1/2 W 5%
R13 R16	2	471-0152	RES. 1.5 K OHM 1/2 W 5%
R12 R23 R26	3	471-0272	RES. 27 K OHM 1/2 W 5%
R1	1	471-0822	RES. .82 K OHM 1/2 W 5%
R15 R17 R19 R22 R24	6	471-0102	RES. 1 K OHM 1/2 W 5%
R1 R2	2	471-0562	RES. 56 K OHM 1/2 W 5%
U3	1	313-0001	I.C. LM 723
U1 U2 U4	3	313-0004	I.C. LM 741

UNLESS OTHERWISE SPECIFIED DIMENSIONS ARE IN INCHES TOLERANCES ARE:		CONTRACT NO.		GREMLIN INDUSTRIES INC. 8401 AERO DR. SAN DIEGO, CA. 92123	
FRACTIONS	DECIMALS	APPROVALS	DATE	POWER SUPPLY/AMP BOARD BLOCKADE PARTS OVERLAY	
±	.XX ±	Joe M.	11-18-76		
MATERIAL		CHECKED		SIZE	CODE IDENT NO. DRAWING NO.
FINISH				D	807-0002A
NEXT ASSY	USED ON	DO NOT SCALE DRAWING		SCALE	2 X
APPLICATION				SHEET	2 OF 1

OMIT R11

807-0002



REVISIONS				
ZONE	LTR	DESCRIPTION	DATE	APPROVED

QTY REQD		CODE IDENT	PART OR IDENTIFYING NO.	NOMENCLATURE OR DESCRIPTION

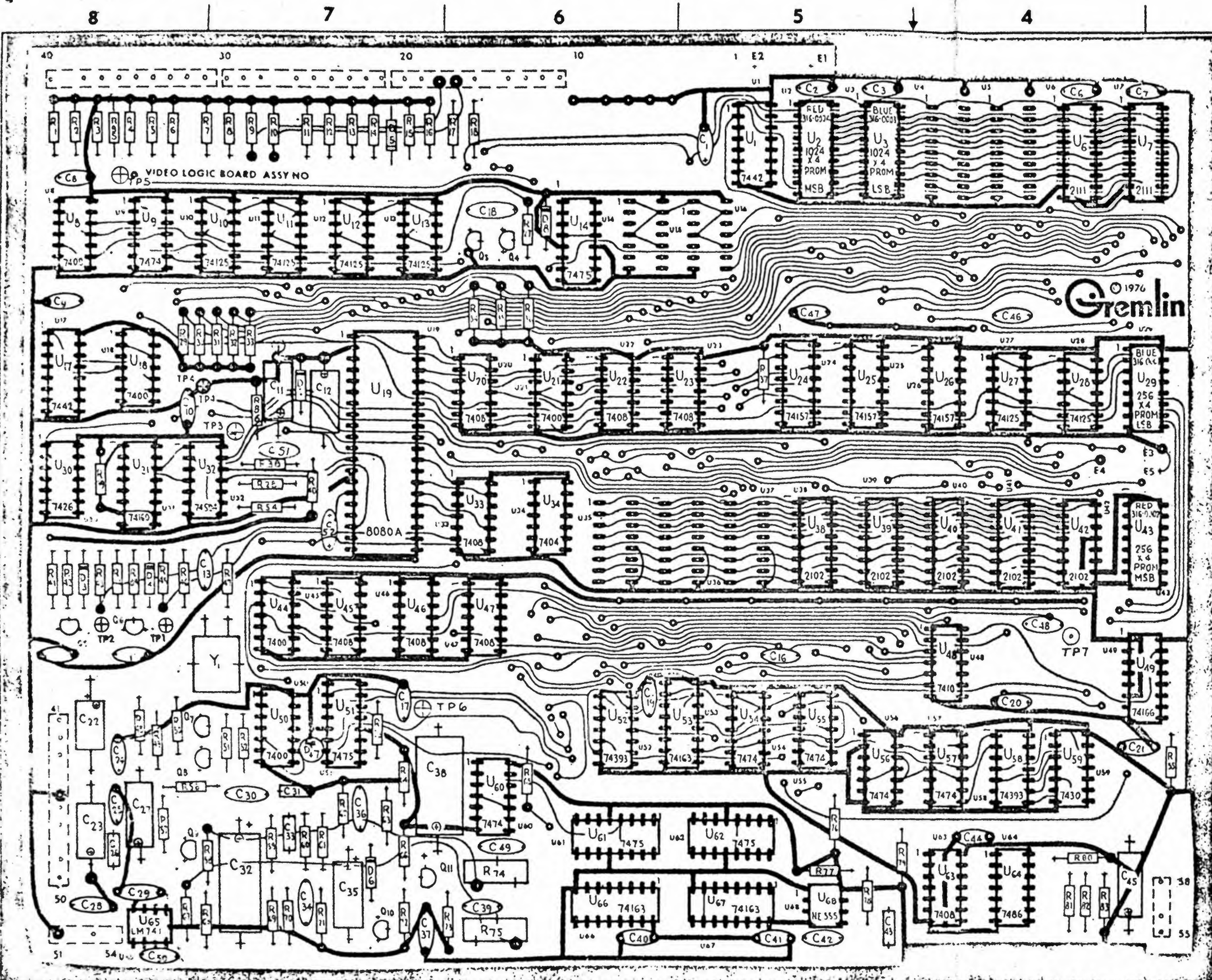
APPROVALS		DATE
DRAWN	Joe M.	10-14-76
CHECKED		

PARTS LIST	
UNLESS OTHERWISE SPECIFIED DIMENSIONS ARE IN INCHES TOLERANCES ARE:	
FRACTIONS	DECIMALS ANGLES
±	.XX ± ° ±
MATERIAL	
FINISH	
NEXT ASSY USED ON	
APPLICATION DO NOT SCALE DRAWING	

CONTRACT NO.		GREMLIN INDUSTRIES INC.	
		8401 AERO DR. SAN DIEGO, CA. 92123	
		SCHEMATIC BLOCKADE VIDEO LOGIC BOARD	
SIZE	CODE IDENT NO.	DRAWING NO.	
D		807-0001B	
SCALE	NONE	SHEET 1 OF 2	

1. ON CONNECTOR PINS 1, 27, 31, 44, 52, 57 ARE PLANK KEYING PINS.

NOTES:



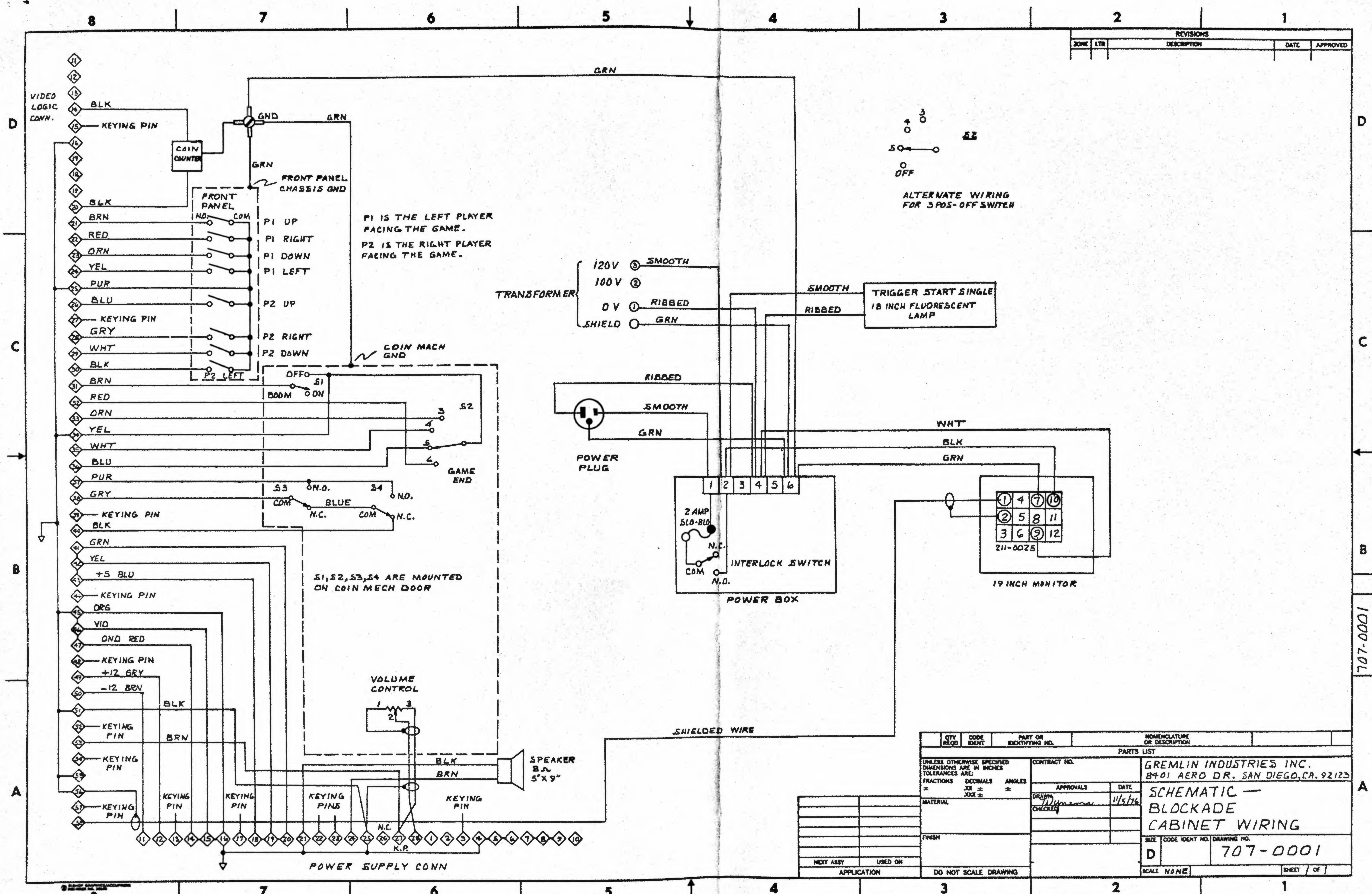
REVISIONS				
ZONE	LTR	DESCRIPTION	DATE	APPROVED

TP - TP7	QTY	PART OR IDENTIFYING NO.	DESCRIPTION
Y1	1	211 - 0004	TEST POINT PINS
U1	1	230 - 0006	XTAL 20.790 MHZ CLK
U2	2	213 - 0002	SKT. 18 PIN DUAL INLN
U3	2	212 - 0004	CONN. MALE 4 PIN
U4	4	212 - 0003	CONN. MALE 10 PIN
PCB1	1	170 - 0057A	PCB. B/A LOGIC
Q4	1	482 - 0006	XISTOR 2N 4403
Q4-Q7-Q9-Q11	7	482 - 0014	XISTOR 2N 4401
Q3	1	482 - 0010	XISTOR PE 8050
D7	1	390 - 0003	LED RED
D6	1	481 - 0003	DIODE ZENER IN960B
D5	1	481 - 0001	DIODE IN 4002
D2	1	481 - 0008	DIODE ZENER IN5231
D8	1	481 - 0006	DIODE IN914 OR IN4148
C63	1	152 - 0007	CAP. F. .001 M 250 V
C32-C38	2	150 - 0012	CAP. F. .47 M 25 V
C11-C33	2	152 - 0015	CAP. F. .033 M 250 V
C11-C27-C35	3	150 - 0015	CAP. E. .22 M 16 V
C74	1	152 - 0001	CAP. F. .1 M 100 V
C1-C2-C23-C45	4	150 - 0004	CAP. E. .10 M 25 V
C50	1	151 - 0008	CAP. CER. .001 M 50 V
C49-C51	2	151 - 0011	CAP. CER. .01 M 50 V
C78-C79-C80-C81-C82-C83	8	151 - 0012	CAP. CER. .1 M 50 V
C12	1	151 - 0005	CAP. CER. .68U P 50 V
C44-C48-C52	7	151 - 0001	CAP. CER. .05 M 50 V
C6-C10-C13-C17-C22-C44	10	151 - 0001	CAP. CER. .05 M 50 V
C1-C11-C14-C15-C16-C18-C19	11	151 - 0001	CAP. CER. .05 M 50 V
R74-R75	2	475 - 0008	RES. 50 K OHM CTS
R58	1	471 - 0224	RES. 220 K OHM 1/2 W 5%
R58	1	471 - 0222	RES. 22 K OHM 1/2 W 5%
R76	1	471 - 0272	RES. 27 K OHM 1/2 W 5%
R67	1	471 - 0473	RES. 47 K OHM 1/2 W 5%
R72	1	471 - 0154	RES. 150 K OHM 1/2 W 5%
R77	1	471 - 0472	RES. 47 K OHM 1/2 W 5%
R61-R71	2	471 - 0682	RES. 68 K OHM 1/2 W
R59-R63-R66-R70	4	471 - 0333	RES. 33 K OHM 1/2 W
R57	1	471 - 0334	RES. 330 K OHM 1/2 W
R53	1	471 - 0101	RES. 100 OHM 1/2 W
R52	1	471 - 0471	RES. 470 OHM 1/2 W
R49	1	471 - 0150	RES. 15 OHM 1/2 W
R44-R51-R56-R73	4	471 - 0512	RES. 51 K OHM 1/2 W
R41-R47-R41-R42	4	471 - 0331	RES. 330 OHM 1/2 W
R43-R45	2	471 - 0220	RES. 22 OHM 1/2 W
R42-R48-R44-R49-R46	5	471 - 0221	RES. 220 OHM 1/2 W
R56-R67	2	471 - 0103	RES. 10 K OHM 1/2 W
R79-R36-R60	9	471 - 0223	RES. 22 K OHM 1/2 W
R27-R80-R47-R41-R44	5	471 - 0102	RES. 1 K OHM 1/2 W
R64-R65-R69-R74-R79-R85	6	471 - 0102	RES. 1 K OHM 1/2 W
R1-R16-R17-R18-R19-R20-R21	23	471 - 0102	RES. 1 K OHM 1/2 W 5%
U3	1	316 - 0003	I.C. 1024x4 PROM LSB
U43	1	316 - 0002	I.C. 256x4 PROM MSB
U38-U42	5	315 - 0015	I.C. 2102 RAM (500 NS)
U6-U7	2	315 - 0018	I.C. 2111 RAM (500 NS)
U68	1	314 - 0001	I.C. TIMER NE 555
U65	1	313 - 0004	I.C. LM741
U64	1	314 - 0022	I.C. 7486
U59	1	314 - 0020	I.C. 7430
U53-U66-U67	3	314 - 0038	I.C. 74163
U52-U58	2	314 - 0030	I.C. 74393
U49	1	314 - 0039	I.C. 74166
U48	1	314 - 0010	I.C. 7410
U14-U51-U61-U62	4	314 - 0021	I.C. 7475
U34	1	314 - 0015	I.C. 7404
U32	1	314 - 0046	I.C. 74504
U31	1	314 - 0032	I.C. 74160
U30	1	314 - 0031	I.C. 7426
U29	1	316 - 0001	I.C. 256x4 PROM LSB
U24-U26	3	313 - 0029	I.C. 74157
U20-U23-U24-U25-U26-U27	8	314 - 0012	I.C. 7408
U19	1	315 - 0014	I.C. 8080A CPU
U10-U13-U17-U28	6	314 - 0017	I.C. 74125
U15-U4-U5-U7-U60	6	314 - 0006	I.C. 7474
U14-U11-U44-U50	5	314 - 0009	I.C. 7400
U2	1	316 - 0004	I.C. 1024x4 PROM MSB
U17	2	314 - 0011	I.C. 7442

- NOTES:
- ON CONNECTOR PINS 15 27 39 44 48 52 54 57 ARE BLANK KEYING PINS.
 - OMIT U4-U5-U15-U16-U35-U36-U37 R19-R26 C4-C5 Q1-Q2 D1 D3 D4
 - LAST D NO. USED D8
 - LAST C NO. USED C52
 - LAST Q NO. USED Q11
 - LAST R NO. USED R86
 - LAST U NO. USED U68

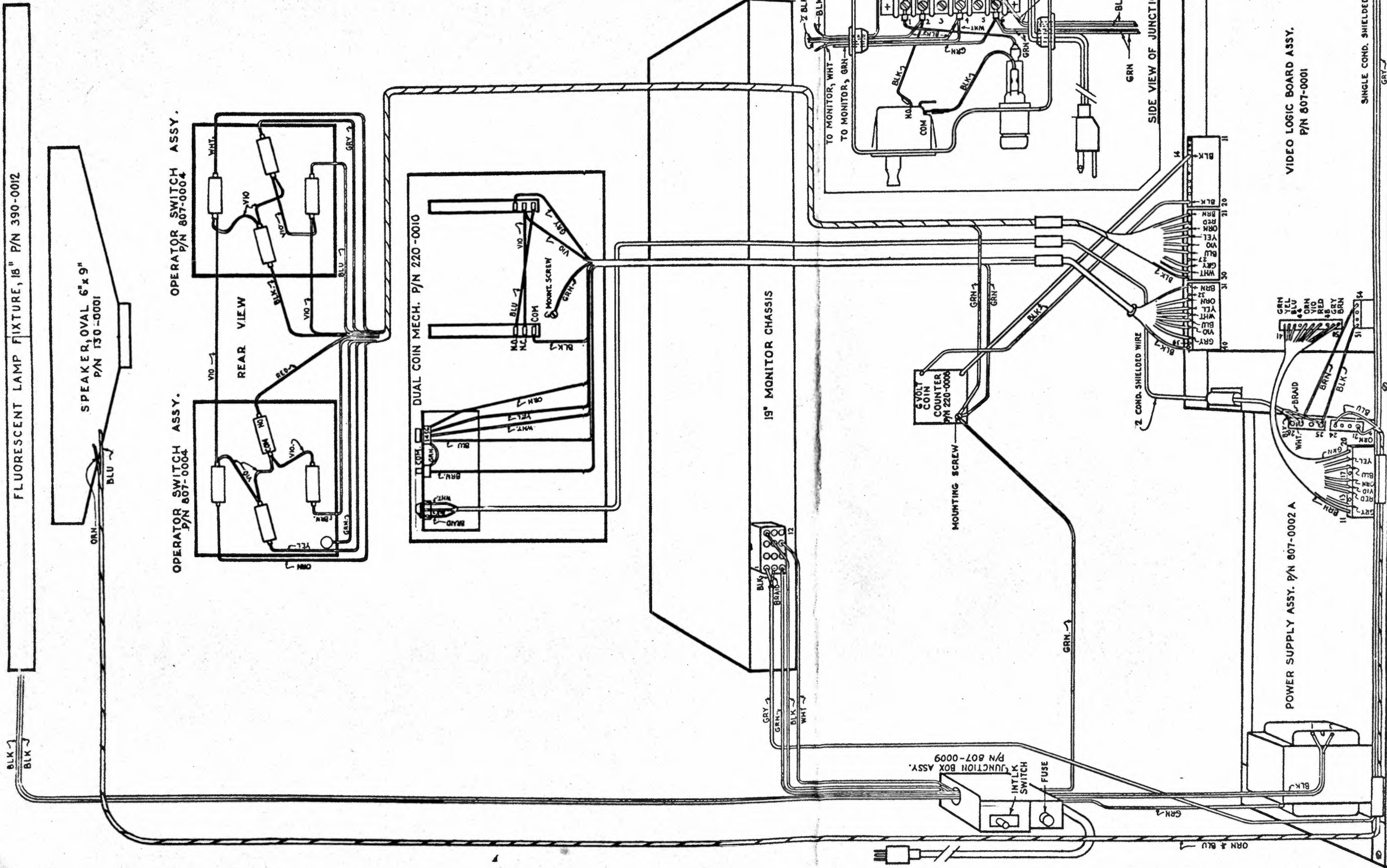
ITEM NO.	QTY	PART OR IDENTIFYING NO.	DESCRIPTION
PARTS LIST			
UNLESS OTHERWISE SPECIFIED DIMENSIONS ARE IN INCHES TOLERANCES ARE:		CONTRACT NO.	
FRACTIONS	DECIMALS	ANGLES	
±	.XX ±	±	
		APPROVALS	
		DATE	
		DRAWN Joe M. 11-5-76	
		CHECKED	
MATERIAL			
FINISH			
NEXT ASSY		USED ON	
APPLICATION		DO NOT SCALE DRAWING	
		GREMLIN INDUSTRIES INC. 8401 AERO DR. SAN DIEGO, CA. 92123	
		VIDEO LOGIC BOARD BLOCKADE PARTS OVERLAY	
SIZE		CODE IDENT NO. DRAWING NO.	
D		807-0001 B	
SCALE 2 X		SHEET 1 OF 1	

REVISIONS				
ZONE	LTR	DESCRIPTION	DATE	APPROVED



QTY REQD	CODE IDENT	PART OR IDENTIFYING NO.	NOMENCLATURE OR DESCRIPTION
PARTS LIST			
UNLESS OTHERWISE SPECIFIED DIMENSIONS ARE IN INCHES TOLERANCES ARE:		CONTRACT NO.	
FRACTIONS ±	DECIMALS .XX ±	ANGLES ±	DATE 11/5/76
MATERIAL		DRAWN BY [Signature]	
FINISH		CHECKED BY [Signature]	
NEXT ASSY		USED ON	
APPLICATION		DO NOT SCALE DRAWING	
GREMLIN INDUSTRIES INC. 8901 AERO DR. SAN DIEGO, CA. 92123			SCHEMATIC - BLOCKADE CABINET WIRING
SIZE D	CODE IDENT NO.	DRAWING NO.	707-0001
SCALE NONE	SHEET		OF

707-0001



CONTRACT NO.		DATE	
APPROVALS		11-18-76	
DRAWN Joe M.		CHECKED	
GREMLIN INDUSTRIES INC. 8401 AERO DR. SAN DIEGO, CA. 92123			
CABINET WIRING BLOCKADE			
TOTAL NO. OF SHEETS		DRAWING NO.	
D		707-0001	
SHEET NO.		SHEET 1 OF 1	