

SEGA®

Ollie King™



Good to KING

 *Chihiro*

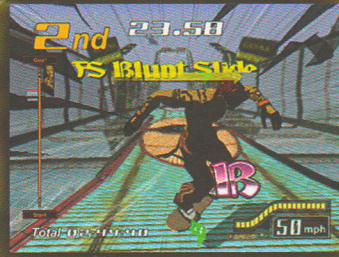
Amusement Vision

©SEGA / AMUSEMENT VISION, 2004

SUITABLE FOR ALL AGES

Ollie King™

Put your board
where your mouth is ...
'N LET'S SEE WAT YA GOT!



Ollie King features include: 3 STAGES -

- SAN FRANCISCO - race through backgrounds of ocean, blue sky, and red hot sunshine!
- LONDON - The city lights are on as you break the rules through Piccadilly Circus.
- KYOTO - The peaceful city of Kyoto is a blur at the speeds you'll be going.

LINKABLE UP TO 4 - Play against your friends or race against the CPU. Either way, you're in for some intense action.

TRICKS

- Over-the-top skateboarding moves that bring waves of groovy graphics to the game play.
- Combination Jump and Grind Tricks that speed you past your rival.

CHIHIRO SYSTEM

Delivers unmatched graphics and sound.



Dimensions:
86" L x 33" W x 82" H
683 lbs



Distributed by



Sega Amusements USA, Inc.
650 Townsend Street, Suite 575 • San Francisco CA 94103
(415) 701-6500 • fax 701-6568 • www.segarcade.com



Chihiro™

© SEGA/AMUSEMENT VISION, 2004
The Ethies, Es and Emerica trademarks and logos featured or depicted herein are used under license by Sole Technology, Inc. All the trademarks are used under appropriate Properties of all trademark owners used with permission.