

A REAL TEST OF CUNNING AND
COURAGE FOR THE MACHO MAN!

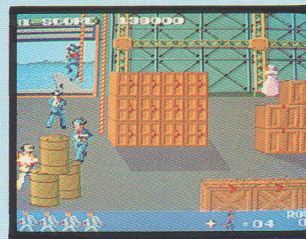
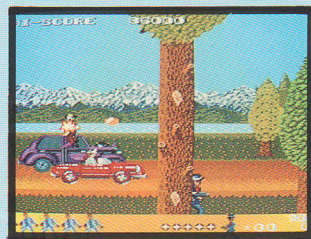
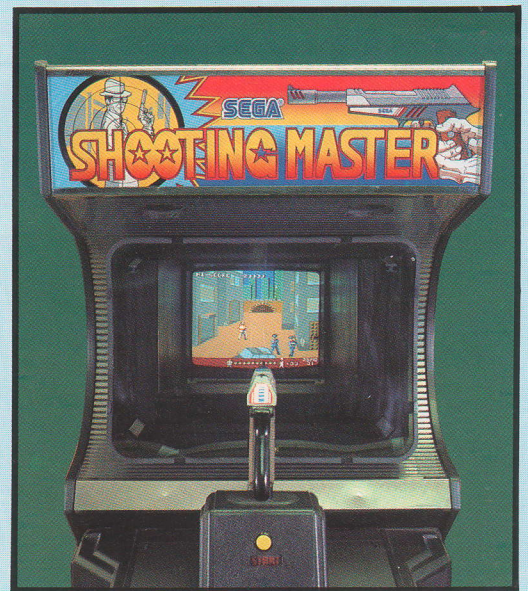
SHOOTING MASTER



SEGA®

SHOOTING MASTER

You are asked to undertake a top secret mission! Princess Iris of the Kingdom of a European country has been kidnapped by a criminal syndicate. In an effort to save the Princess, you begin your solitary battle against the huge enemy organization. In order to be able to safely rescue her, you must survive the shoot-outs in the streets and the warehouse, and also a running gun battle through the forest and by the sea where the enemy is in hot pursuit of you! This is a real test of cunning and courage for the he-man type of player, an adventurer who is at the same time, both cold-blooded when relentlessly shooting at the enemy, but full of compassion and willing to risk his own life in order to rescue the Princess.



HOW-TO-PLAY

- The player shoots at the enemy in an effort to destroy him.
- In each round of the game, the enemy's boss appears. Destroying him will enable you to proceed to the following round.

CAUTION: The enemy's boss can't be downed with only one shot, but instead must be hit a total of 5 consecutive times to be destroyed.
- Every time the player is shot by the enemy, the number of ☆ mark(s) displayed at the bottom of the screen increases by one. When the total becomes 10, one player is lost.
- The number of players allotted can be preset. Losing all of the players will result in GAME OVER appearing on the screen.

TIP: Shooting the enemy immediately before he attempts to fire at you will cause the number of ☆ mark(s) to decrease. To protect the Princess, anything that obstructs her way when she is trying to escape should also be destroyed. Shoot the bombs down before they reach their destination so as to prevent any serious damage from occurring.

NEW SPECIAL FEATURES

- The gun is equipped with a recoiling mechanism, which allows you to actually feel the full impact of every shot, thus giving you the opportunity to experience the thrill of firing a "real" gun.
- The gun can also be moved horizontally so as to enable you to more easily line up the action on the screen, thereby enhancing your accuracy and making it a physical as well as a mental game.

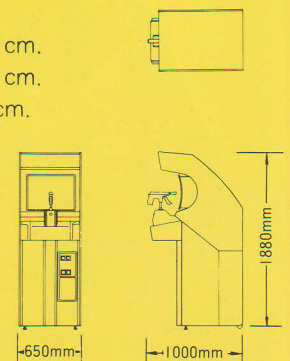
SPECIFICATIONS

Dimensions: (H) 74.0 in., 188 cm.
(D) 39.4 in., 100 cm.
(W) 25.6 in., 65 cm.

Weight: 255.7 lbs.
116 kg.

Power consumption:
AC 100V 205W
(165W when in a standby condition)

CRT: 20 inch, color



SEGA creates a "High Tech Life"

Design and specifications subject to change without notice. SG-8516E

SEGA®

Sega Enterprises, Ltd.
2-12, Haneda 1-chome, Ota-ku, Tokyo 144, Japan
Tel: (03)743-7438 Fax: (03)743-5539
Tlx: J22357 SEGASTAR
Sega Enterprises, Inc. (U.S.A.)
2149 Paragon Drive, San Jose, CA 95131
U.S.A. Tel: (408)435-0201 Fax: (408)435-0294
Sega Europe Limited
410-420 Rayners Lane, Pinner, Middx, HA5
5DY, England Tel: 01-868-2331 Tlx: 893501
SEGAUK G Fax: 01-429-3137

DISTRIBUTED BY:

