

SOUL EDGE™ Ver. II



New Fierce Characters

New Time Attack Mode

New Killer Moves

New Guard Attack

New Air Attacks

New Backgrounds

**Transcending history and the world.
A tale of Souls and Swords, eternally retold.**

SOUL EDGE'S game play is absolutely superb. The characters can sidestep, defend, counter, and perform any number of dangerous special moves. Combination moves play an integral role in conquering your opponent.

SOUL EDGE is available as a kit or dedicated game. Don't let your guard down! Stop by your local Distributor and experience this one for yourself!

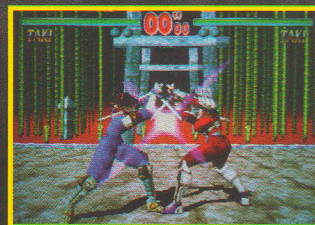
The character design of Soul Edge is unrivaled. Each fighter is beautifully rendered, shaded, and texture-mapped utilizing Namco's unsurpassed System II. Characters are brought to life with Namco's motion capture technology. The fighters look real, they breath, they scowl, they respond effortlessly to the players commands. The shiny steel weapons used throughout the game glisten, from dawn to dust to the bleakness of the night.



Combination moves are an integral feature



The character design is unrivaled.



Features unique "Guard on Guard" element.

namco®
The Game Creator

© 1995 1996 NAMCO LTD., All rights reserved.

NAMCO AMERICA INC.
150 Charcot Avenue / San Jose, CA 95131
Phone: (408) 383-3900 / Fax: (408) 383-0128
NAMCO AMERICA INC. SALES OFFICE
877 Supreme Drive / Bensenville, IL 60106
Phone: (708) 238-2248 / Fax: (708) 238-9333