

- New 1 player driving excitement
- 12 different tracks change automatically every 1 or 2 laps

- Optional game times and extended bonus play
- Built-in self-test program
- Compact cabinet design



Sprint One

Sprint 1™ is the exciting new 1 player version of the top earning Sprint 2™ with new features and options added for extra challenge, and extra replay.

A new compact cabinet design along with the same spectacular action play features means Sprint 1 can now generate the same high collections as Sprint 2 in locations with less available floor space.

The sleek wood grain cabinet adds even more to the location versatility of this popular attraction.

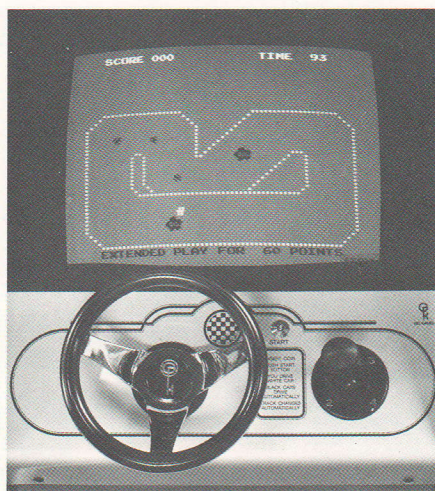
12 games in one.

The player sprints the clock around as many tracks as possible with 2 computer "drone" cars as constant traffic companions adding to the skill required. Hitting "drone" cars causes temporary loss of control and game time.

There are 12 different tracks that change automatically. Operators can program the game to change tracks after one lap or after every 2 laps.

Realistic acceleration, quick response steering, 4 speed shifting, "drifting" on corners and optional oil slicks add to the fast-paced driving action.

More realistic sound—the roar of engines, the screeching of tires around



turns and over oil slicks put the player *in* the action.

Exclusive operator options.

Extended play. An extra ride can be awarded after a pre-selected score is reached by the driver. "Extended Play" also flashes on the screen with a numeric count-down in seconds.

Game time. Game time is operator adjustable to 60, 90, 120 or 150 seconds. Extended play also self-adjusts to whatever game time has been selected.

Oil slicks. You can have Sprint 1 with or without oil slicks to add more challenge.

Coinage. Can be set at one coin per play, two coins per play, two plays per coin.

Less time in the pits. More time on the track. Sprint 1 is designed for rugged long-lasting action.

Durable construction, Durastress™—tested solid-state reliability and Instapart™ parts turnaround add up to minimum down-time.

Built-in self-test system added to thorough distributor and factory service backup, Sprint 1 has Atari's unique built-in self-test program that displays all microprocessor and memory functions including switches and options for easy on-the-spot trouble-shooting.

Dimensions.

Height: 60," 152 cm; Width: 25¼," 64 cm; Depth: 30," 76 cm. Monitor: 23."

Take the Green.

Check your local Atari distributor or contact us for referral at Atari Inc., 1265 Borregas Avenue, Sunnyvale, CA 94086. (408) 745-2500.

Distributed By: