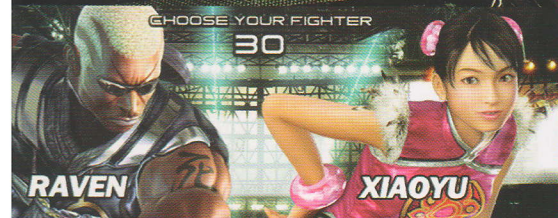


# 鉄拳 TEKKEN 5

## The Best of the Best!

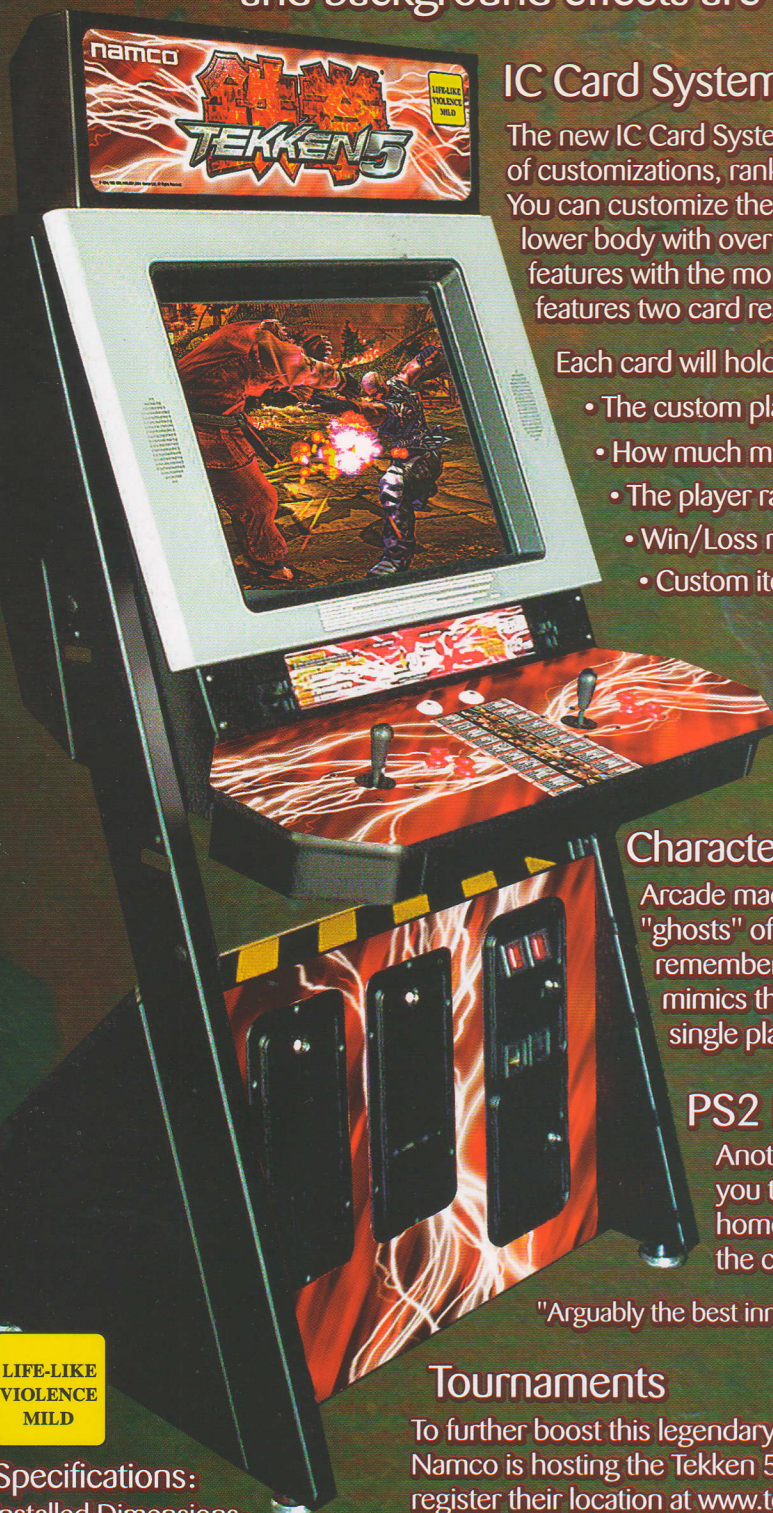
A decade in the making, Tekken 5 embodies NAMCO's finest technology, strongest game play and our commitment to your bottom line!

- The powerful, NEW hardware system is 33% faster than it's little sister... the PS2.
- The NEW IC Card System provides access to a broad range of new features found only in Tekken 5!
- The Time Release element of adding new characters, customized items and more will pull players in long after the game's initial release.
- The cabinet features PS2 pad ports allowing players the ability to bring in their own PS2 controls... another Namco innovation.
- Sleek, sexy, adjustable cabinet (patent pending). Play in either an upright or sit-down position!
- TOURNAMENT READY!



Tekken 5 is powered by NAMCO's new proprietary 256 Hardware System, the fastest system available on the market!

The realism of the characters movements and background effects are unrivaled.



## IC Card System

The new IC Card System provides access to a broad range of customizations, rank achievements and statistic tracking. You can customize the characters head, face, upper and lower body with over 50 items. You "buy" the custom features with the money earned by playing. The cabinet features two card readers and one card dispenser.

Each card will hold customization data for one character

- The custom player name
- How much money the player has accumulated
- The player rank
- Win/Loss record and percentage
- Custom items and colors

## Character Time Release and Ghosts

Arcade machines will have the ability to keep "ghosts" of other players. The machine remembers the player's playing style and mimics that style against you during a single player match.

## PS2 Ports

Another first for Tekken, is the ability for you to bring in your PS2 pads from home and plug them into the ports on the control panel of the dedicated game.

"Arguably the best innovation to hit US arcades in some time."  
- GameDAILY.com

## Tournaments

To further boost this legendary franchise and it's earning power Namco is hosting the Tekken 5 tournaments. Locations are urged to register their location at [www.tekken.vg](http://www.tekken.vg). Players will know where to go to participate in this history-making event.

LIFE-LIKE  
VIOLENCE  
MILD

### Specifications:

Installed Dimensions:

74"H x 36.5"W x 31.5"D

Power Consumption: 350 watts

Specifications subject to change without notice

©1994, 1995, 1996, 1999, 2001, 2004, Namco Ltd., All Rights Reserved. [www.namcoarcade.com](http://www.namcoarcade.com)  
For more information contact your local distributor, Namco America Sales Office or visit [www.tekken.vg](http://www.tekken.vg)  
Namco America Inc. 2055 Junction Avenue, San Jose, CA 95131 Tel: (408) 383-3900 Fax: (408) 383-0128  
Namco America Sales 877 Supreme Drive, Bensenville, IL 60106 Tel: (630) 238-2248 Fax: (630) 238-9333

**namco**