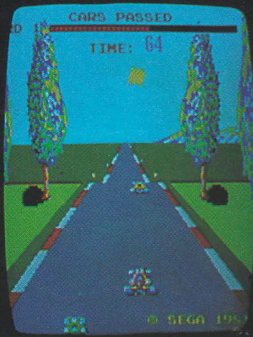


SEGA®

# TURBO™



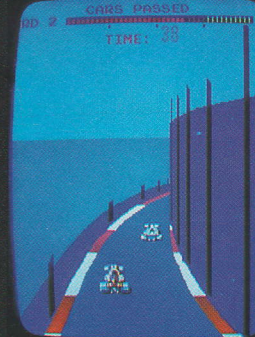
**Racers off to a good start.**



**Turbo screeching towards the country.**



**Tunnel vision raceway.**



**Dangerous ocean-front palisade racing.**



**Turbo lapping racers at sunset.**

## A TRIO OF TREMENDOUS EARNERS.

The aerodynamic Turbo cockpit is fully equipped with an L.E.D. instrument panel that maps acceleration, indicates the top five scores to beat, shows score of the last game played, and measures record breaking speeds. Standard features include a pro rally steering wheel, responsive 2-speed gear stick shift, illuminated oil and temperature gauges and a full power accelerator pedal, all in the realistic cockpit of a turbo charged race car.

Turbo is also available in the standard upright and mini-upright models. Both models feature the pro rally steering wheel, responsive 2-speed gear stick shift, illuminated oil and temperature gauges, full power accelerator pedal, and the score indicator.

All three models offer behind-the-wheel excitement in a grueling cross country race. Road handling skills are put to the test as the Turbo course winds through busy city streets, narrow suspension bridges, blind tunnels and rambling country roads.

Sudden changes in road

conditions such as snow, reckless competitors and an emergency ambulance further challenge the player's driving abilities.

No pit stops are permitted in this fast-paced race to the finish. Points are accumulated as Turbo successfully routes through each phase of the course, lapping other cars. Drivers can monitor their progress at a glance with read outs for time remaining on the clock and number of cars passed.

Collision during the first lap sends drivers back to the starting line. In succeeding laps,

however, a collision explodes the Turbo car on impact.

In a rolling rural straightaway, road dips obscure cars ahead creating a hazardous sequence that taxes the driver's skill. Player must exercise caution and check speed while approaching road dips and climbing steep hills.

An extended play bonus is awarded when drivers pass sufficient cars with time to spare. Lapping cars during this phase tacks on bonus points.

Turbo can be your high income pacesetter. Visit your local SEGA/Gremlin distributor today and test drive a TURBO.



**Standard Upright:** 72" high, 25¼" wide, 36" deep, 330 lbs.

**Cockpit:** 56" high, 27½" wide, 72" long, 410 lbs.

**SEGA®/Gremlin®**

**SEGA**<sup>®</sup>

# TURBO™-MINI

## MAXI TURBO EXCITEMENT IN MINI TURBO SIZE.

Now all the driving thrills and high performance excitement of SEGA/Gremlin's popular Turbo game are available in space-saving Mini-Upright cabinetry. More compact and lighter in weight than the standard upright model, the Turbo Mini-Upright requires only 3.4 square feet of floor space — the perfect earner

for space-conscious street locations as well as arcades.

Sega's new Turbo Mini-Upright is the perfect size for younger players to view, steer, shift and accelerate with comfort and ease. So now you can get fast-paced, high-speed racing adventure with fantastic graphics and exciting sound for players of all ages.

Sega's Turbo Mini-Upright includes all the same exciting game play features that have made the standard upright

Turbo an industry leader: Pro rally steering wheel, responsive 2-speed gear shift, illuminated oil and temperature gauges, and a full power accelerator pedal.

Put the realism of grand prix racing to work for you today. Test drive Sega's Turbo Mini-Upright at your SEGA/Gremlin distributor and get maximum earnings in minimum floor space.

**Dimensions: 59½ inches high,  
20½ inches wide, 24 inches deep.  
Weight: 190 lbs.**

GREMLIN INDUSTRIES, INC., 16250 Technology Drive, San Diego, CA 92127, (714) 485-0910, TWX 910-335-1621.  
SEGA ENTERPRISES, LTD., #2-12 Haneda, 1-Chome, Ohta-ku, Tokyo, Japan, TLX 781-22357.  
SEGA EUROPE, LTD., 15 Old Bond Street, Mayfair, London, England, W1X 3DB, TLX 847777.  
SEGA ENTERPRISES, INC., One Century Plaza, 2029 Century Park East, Suite 2920, Los Angeles, CA 90067, TLX 688433.

**SEGA**<sup>®</sup>/**Gremlin**<sup>®</sup>

**TURBO IS ONE OF THIS YEAR'S  
TOP EARNING VIDEO GAMES, ACCORDING  
TO INDUSTRY SURVEYS.**

