

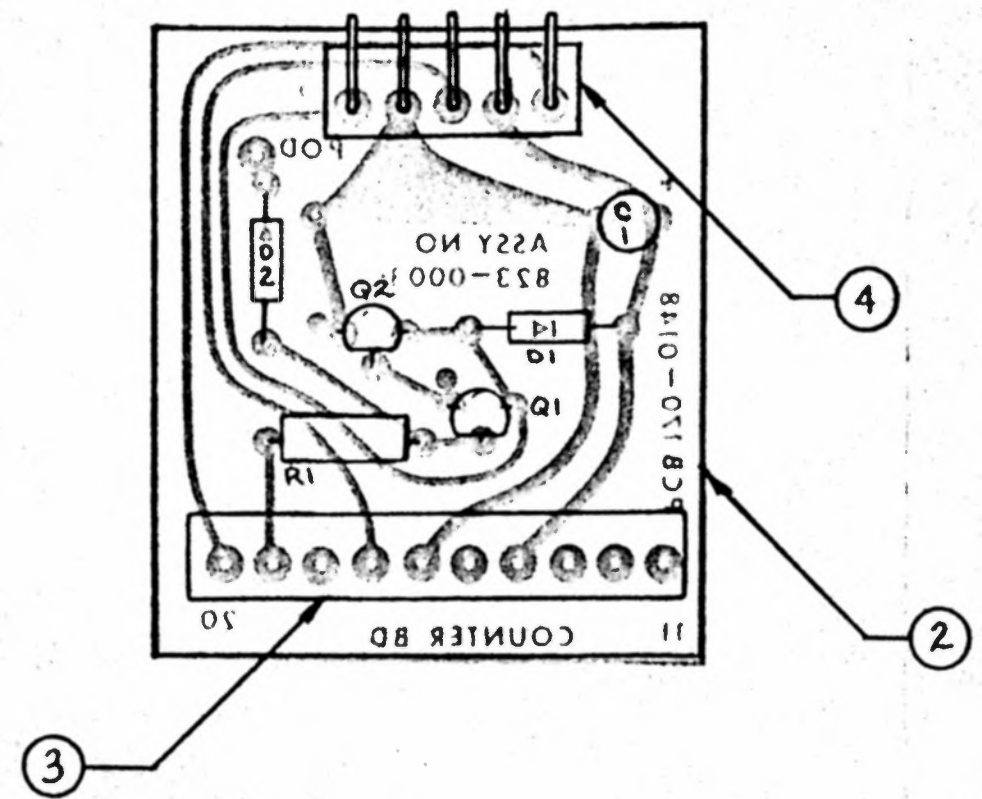
REVISIONS				
ZONE	LTR	DESCRIPTION	DATE	APPROVED

PROPRIETARY INFORMATION!
 No use, reproduction or duplication may be made of this information without the expressed written permission of Intermark Industries, Inc.

NOTE: UNLESS OTHERWISE SPECIFIED

UNLESS OTHERWISE SPECIFIED DIMENSIONS ARE IN INCHES TOLERANCES ARE: FRACTIONS DECIMALS ANGLES XX ± XX ± XX ±		CONTRACT NO.	
MATERIAL		APPROVALS	DATE
FINISH		DRAWN <i>X. Brewer</i>	<i>8-10-78</i>
NEXT ASSY		CHECKED <i>Steve Fay</i>	<i>10-2-78</i>
USED ON		ASSY COUNTER BOARD	
APPLICATION		SIZE B	CODE IDENT NO
DO NOT SCALE DRAWING		DRAWING NO	823-0003
		SCALE	SHEET 3 of 4

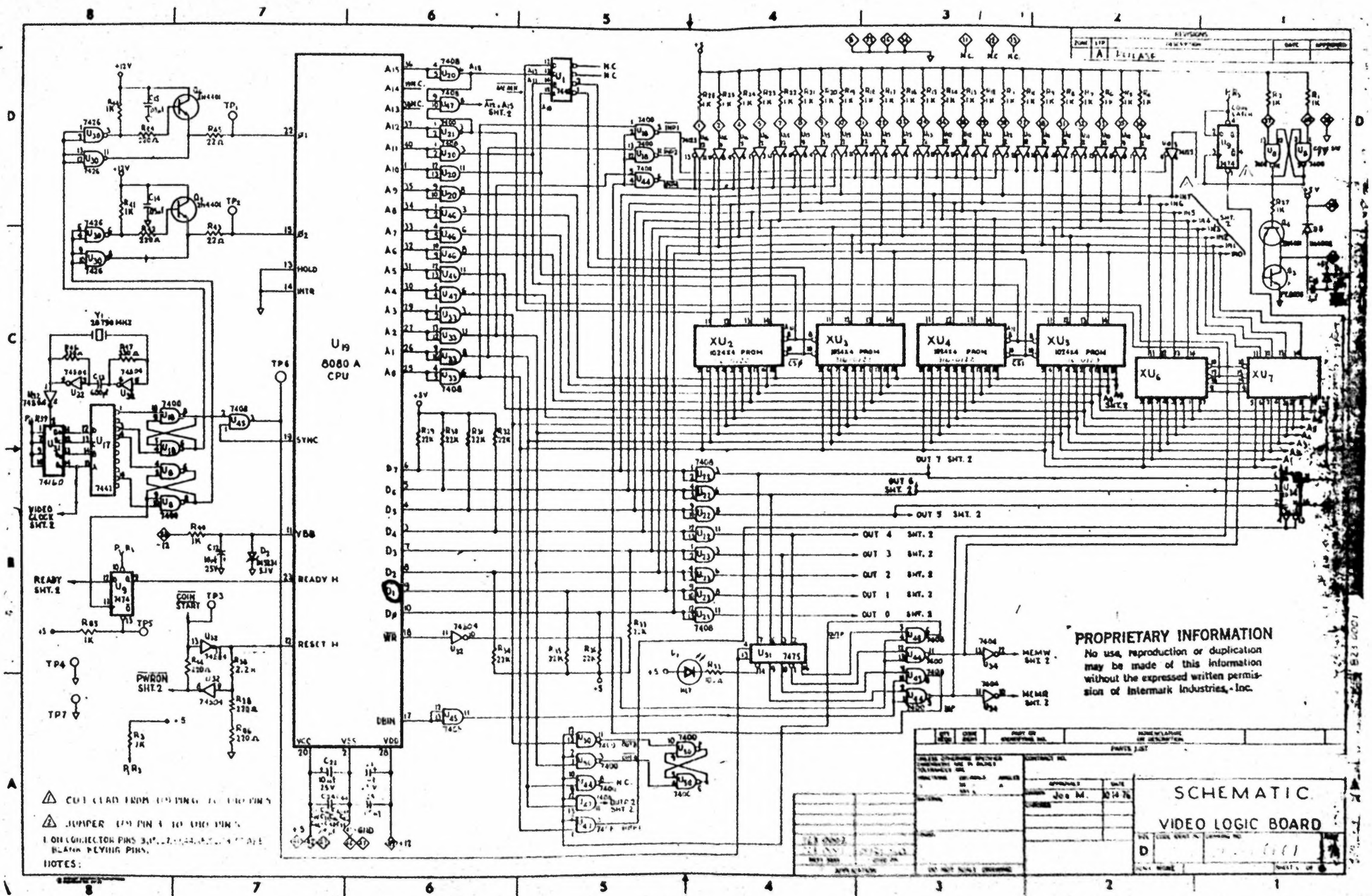
REVISIONS				
ZONE	LTR	DESCRIPTION	DATE	APPROVED



PROPRIETARY INFORMATION
 No use, reproduction or duplication
 may be made of this information
 without the expressed written permis-
 sion of Intermark Industries, Inc.

NOTE: UNLESS OTHERWISE SPECIFIED

UNLESS OTHERWISE SPECIFIED DIMENSIONS ARE IN INCHES TOLERANCES ARE: FRACTIONS DECIMALS ANGLES ± .XX ± . XXX ±		CONTRACT NO.		ASSY COUNTER BOARD	
MATERIAL		APPROVALS	DATE		
FINISH		DRAWN <i>W. Brown</i> 8-10-78 CHECKED <i>Steve J. Fay</i> 10 Aug 78		DRAWING NO. 823-0003 A	
NEXT ASSY	USED ON	SCALE		SHEET 4 OF 4	
APPLICATION		DO NOT SCALE DRAWING			



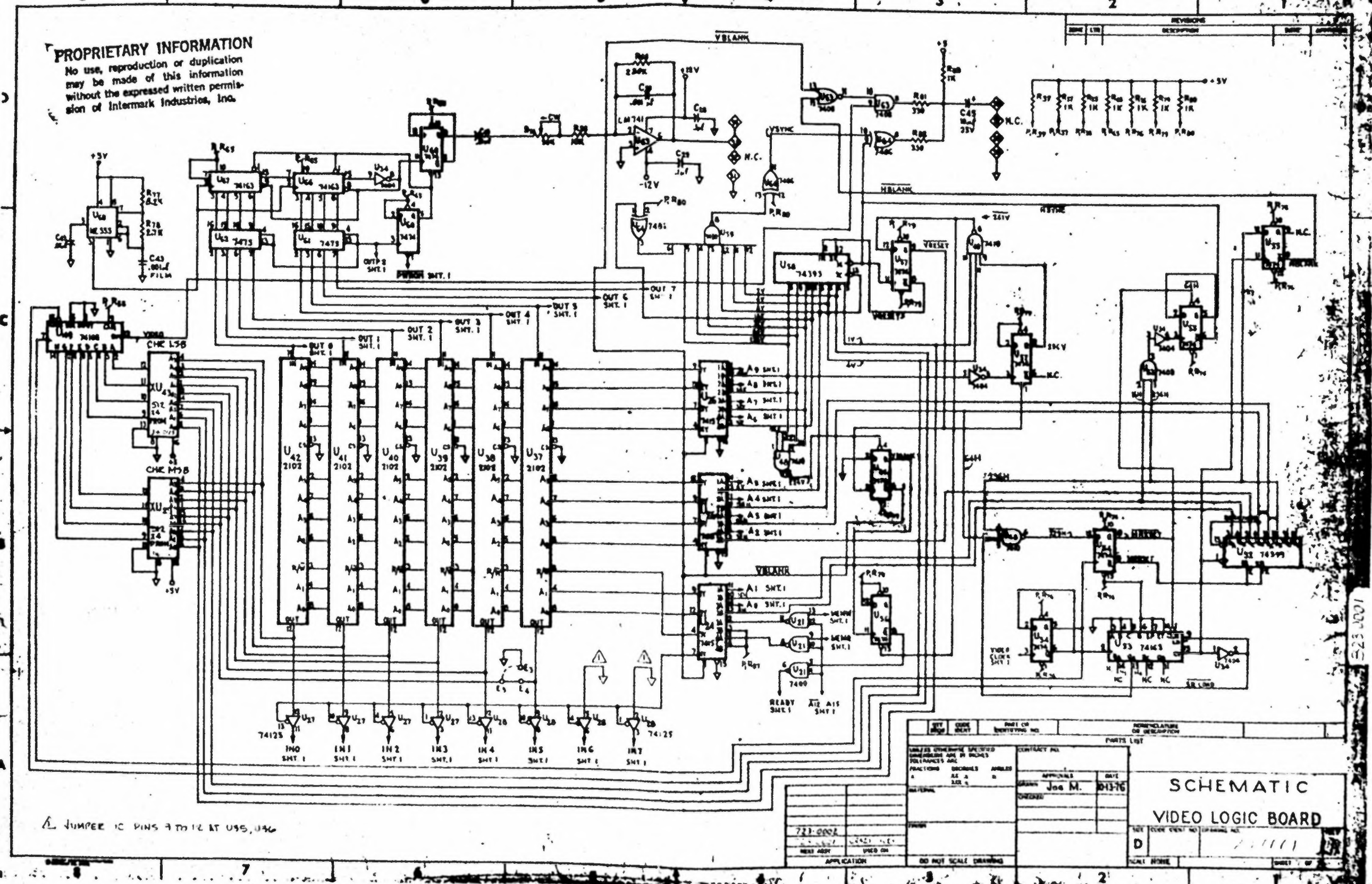
▲ CUT LEAD FROM BOARD TO FIT DIMS
 ▲ JUMPER (PIN 5 TO PIN 1)
 1 ON CONNECTOR PINS 3, 4, 5, 6, 7, 8, 9, 10, 11, 12, 13, 14, 15, 16, 17, 18, 19, 20, 21, 22, 23, 24, 25, 26, 27, 28, 29, 30, 31, 32, 33, 34, 35, 36, 37, 38, 39, 40, 41, 42, 43, 44, 45, 46, 47, 48, 49, 50, 51, 52, 53, 54, 55, 56, 57, 58, 59, 60, 61, 62, 63, 64, 65, 66, 67, 68, 69, 70, 71, 72, 73, 74, 75, 76, 77, 78, 79, 80, 81, 82, 83, 84, 85, 86, 87, 88, 89, 90, 91, 92, 93, 94, 95, 96, 97, 98, 99, 100, 101, 102, 103, 104, 105, 106, 107, 108, 109, 110, 111, 112, 113, 114, 115, 116, 117, 118, 119, 120, 121, 122, 123, 124, 125, 126, 127, 128, 129, 130, 131, 132, 133, 134, 135, 136, 137, 138, 139, 140, 141, 142, 143, 144, 145, 146, 147, 148, 149, 150, 151, 152, 153, 154, 155, 156, 157, 158, 159, 160, 161, 162, 163, 164, 165, 166, 167, 168, 169, 170, 171, 172, 173, 174, 175, 176, 177, 178, 179, 180, 181, 182, 183, 184, 185, 186, 187, 188, 189, 190, 191, 192, 193, 194, 195, 196, 197, 198, 199, 200, 201, 202, 203, 204, 205, 206, 207, 208, 209, 210, 211, 212, 213, 214, 215, 216, 217, 218, 219, 220, 221, 222, 223, 224, 225, 226, 227, 228, 229, 230, 231, 232, 233, 234, 235, 236, 237, 238, 239, 240, 241, 242, 243, 244, 245, 246, 247, 248, 249, 250, 251, 252, 253, 254, 255, 256, 257, 258, 259, 260, 261, 262, 263, 264, 265, 266, 267, 268, 269, 270, 271, 272, 273, 274, 275, 276, 277, 278, 279, 280, 281, 282, 283, 284, 285, 286, 287, 288, 289, 290, 291, 292, 293, 294, 295, 296, 297, 298, 299, 300, 301, 302, 303, 304, 305, 306, 307, 308, 309, 310, 311, 312, 313, 314, 315, 316, 317, 318, 319, 320, 321, 322, 323, 324, 325, 326, 327, 328, 329, 330, 331, 332, 333, 334, 335, 336, 337, 338, 339, 340, 341, 342, 343, 344, 345, 346, 347, 348, 349, 350, 351, 352, 353, 354, 355, 356, 357, 358, 359, 360, 361, 362, 363, 364, 365, 366, 367, 368, 369, 370, 371, 372, 373, 374, 375, 376, 377, 378, 379, 380, 381, 382, 383, 384, 385, 386, 387, 388, 389, 390, 391, 392, 393, 394, 395, 396, 397, 398, 399, 400, 401, 402, 403, 404, 405, 406, 407, 408, 409, 410, 411, 412, 413, 414, 415, 416, 417, 418, 419, 420, 421, 422, 423, 424, 425, 426, 427, 428, 429, 430, 431, 432, 433, 434, 435, 436, 437, 438, 439, 440, 441, 442, 443, 444, 445, 446, 447, 448, 449, 450, 451, 452, 453, 454, 455, 456, 457, 458, 459, 460, 461, 462, 463, 464, 465, 466, 467, 468, 469, 470, 471, 472, 473, 474, 475, 476, 477, 478, 479, 480, 481, 482, 483, 484, 485, 486, 487, 488, 489, 490, 491, 492, 493, 494, 495, 496, 497, 498, 499, 500, 501, 502, 503, 504, 505, 506, 507, 508, 509, 510, 511, 512, 513, 514, 515, 516, 517, 518, 519, 520, 521, 522, 523, 524, 525, 526, 527, 528, 529, 530, 531, 532, 533, 534, 535, 536, 537, 538, 539, 540, 541, 542, 543, 544, 545, 546, 547, 548, 549, 550, 551, 552, 553, 554, 555, 556, 557, 558, 559, 560, 561, 562, 563, 564, 565, 566, 567, 568, 569, 570, 571, 572, 573, 574, 575, 576, 577, 578, 579, 580, 581, 582, 583, 584, 585, 586, 587, 588, 589, 590, 591, 592, 593, 594, 595, 596, 597, 598, 599, 600, 601, 602, 603, 604, 605, 606, 607, 608, 609, 610, 611, 612, 613, 614, 615, 616, 617, 618, 619, 620, 621, 622, 623, 624, 625, 626, 627, 628, 629, 630, 631, 632, 633, 634, 635, 636, 637, 638, 639, 640, 641, 642, 643, 644, 645, 646, 647, 648, 649, 650, 651, 652, 653, 654, 655, 656, 657, 658, 659, 660, 661, 662, 663, 664, 665, 666, 667, 668, 669, 670, 671, 672, 673, 674, 675, 676, 677, 678, 679, 680, 681, 682, 683, 684, 685, 686, 687, 688, 689, 690, 691, 692, 693, 694, 695, 696, 697, 698, 699, 700, 701, 702, 703, 704, 705, 706, 707, 708, 709, 710, 711, 712, 713, 714, 715, 716, 717, 718, 719, 720, 721, 722, 723, 724, 725, 726, 727, 728, 729, 730, 731, 732, 733, 734, 735, 736, 737, 738, 739, 740, 741, 742, 743, 744, 745, 746, 747, 748, 749, 750, 751, 752, 753, 754, 755, 756, 757, 758, 759, 760, 761, 762, 763, 764, 765, 766, 767, 768, 769, 770, 771, 772, 773, 774, 775, 776, 777, 778, 779, 780, 781, 782, 783, 784, 785, 786, 787, 788, 789, 790, 791, 792, 793, 794, 795, 796, 797, 798, 799, 800, 801, 802, 803, 804, 805, 806, 807, 808, 809, 810, 811, 812, 813, 814, 815, 816, 817, 818, 819, 820, 821, 822, 823, 824, 825, 826, 827, 828, 829, 830, 831, 832, 833, 834, 835, 836, 837, 838, 839, 840, 841, 842, 843, 844, 845, 846, 847, 848, 849, 850, 851, 852, 853, 854, 855, 856, 857, 858, 859, 860, 861, 862, 863, 864, 865, 866, 867, 868, 869, 870, 871, 872, 873, 874, 875, 876, 877, 878, 879, 880, 881, 882, 883, 884, 885, 886, 887, 888, 889, 890, 891, 892, 893, 894, 895, 896, 897, 898, 899, 900, 901, 902, 903, 904, 905, 906, 907, 908, 909, 910, 911, 912, 913, 914, 915, 916, 917, 918, 919, 920, 921, 922, 923, 924, 925, 926, 927, 928, 929, 930, 931, 932, 933, 934, 935, 936, 937, 938, 939, 940, 941, 942, 943, 944, 945, 946, 947, 948, 949, 950, 951, 952, 953, 954, 955, 956, 957, 958, 959, 960, 961, 962, 963, 964, 965, 966, 967, 968, 969, 970, 971, 972, 973, 974, 975, 976, 977, 978, 979, 980, 981, 982, 983, 984, 985, 986, 987, 988, 989, 990, 991, 992, 993, 994, 995, 996, 997, 998, 999, 1000.

PROPRIETARY INFORMATION
 No use, reproduction or duplication
 may be made of this information
 without the expressed written permis-
 sion of Intermark Industries, Inc.

PARTS LIST		DATE	
QTY	DESCRIPTION	DATE	BY
1	6808A CPU	10/14/76	J.M.
7	1024-bit PROMs		
1	7408		
1	7404		
1	7400		
1	7401		
1	7402		
1	7403		
1	7405		
1	7406		
1	7407		
1	7409		
1	7410		
1	7411		
1	7412		
1	7413		
1	7414		
1	7415		
1	7416		
1	7417		
1	7418		
1	7419		
1	7420		
1	7421		
1	7422		
1	7423		
1	7424		
1	7425		
1	7426		
1	7427		
1	7428		
1	7429		
1	7430		
1	7431		
1	7432		
1	7433		
1	7434		
1	7435		
1	7436		
1	7437		
1	7438		
1	7439		
1	7440		
1	7441		
1	7442		
1	7443		
1	7444		
1	7445		
1	7446		
1	7447		
1	7448		
1	7449		
1	7450		
1	7451		
1	7452		
1	7453		
1	7454		
1	7455		
1	7456		
1	7457		
1	7458		
1	7459		
1	7460		
1	7461		
1	7462		
1	7463		
1	7464		
1	7465		
1	7466		
1	7467		
1	7468		
1	7469		
1	7470		
1	7471		
1	7472		
1	7473		
1	7474		
1	7475		
1	7476		
1	7477		
1	7478		
1	7479		
1	7480		
1	7481		
1	7482		
1	7483		
1	7484		
1	7485		
1	7486		
1	7487		
1	7488		
1	7489		
1	7490		
1	7491		
1	7492		
1	7493		
1	7494		
1	7495		
1	7496		
1	7497		
1	7498		
1	7499		
1	7500		

SCHEMATIC
VIDEO LOGIC BOARD

PROPRIETARY INFORMATION
 No use, reproduction or duplication
 may be made of this information
 without the expressed written permis-
 sion of Intermark Industries, Inc.



▲ JUMPER IC PINS 9 TO 12 AT U95, U96

REV	DATE	REV OF	DESCRIPTION

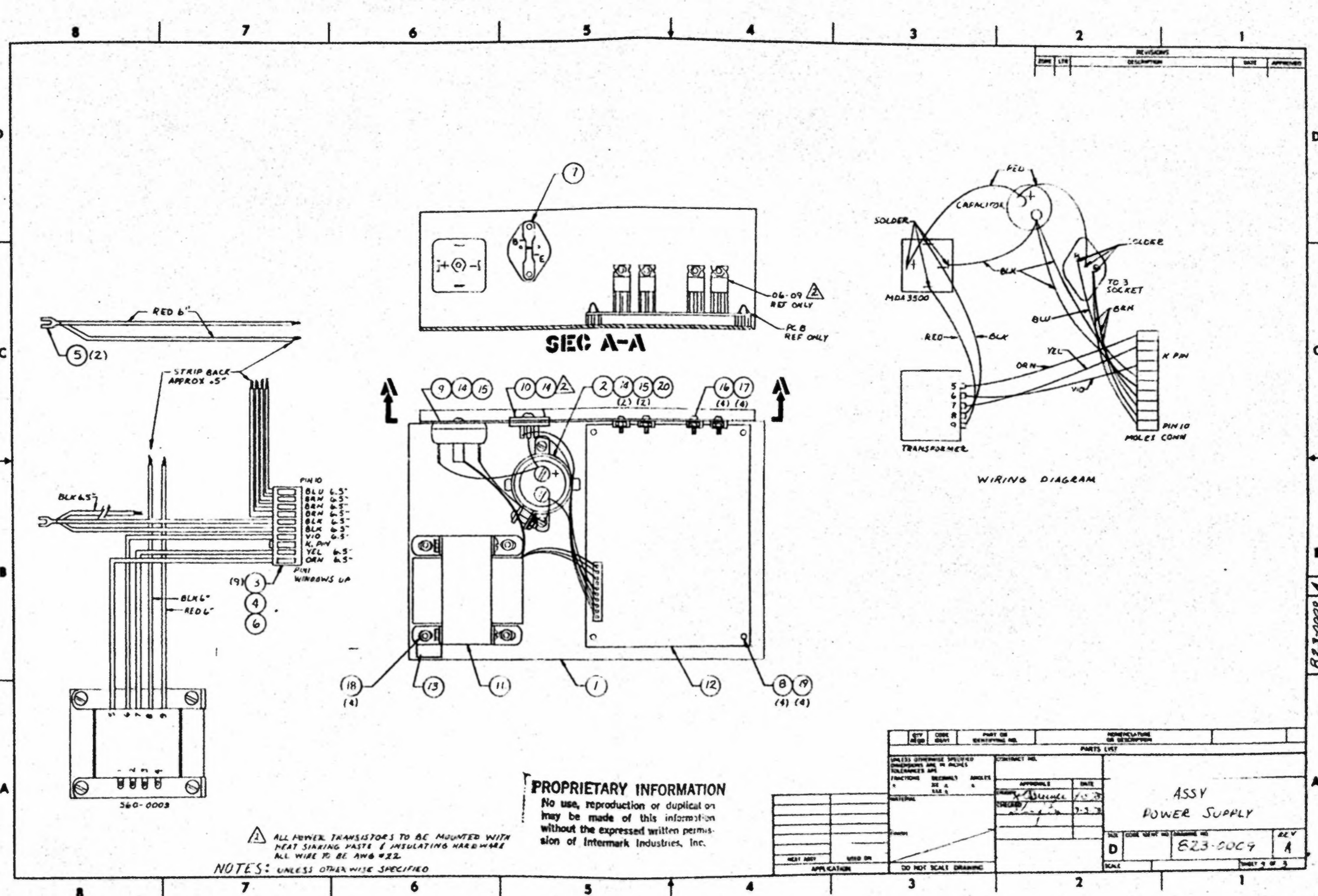
QTY	REF	DESCRIPTION	REMARKS

DATE	BY	APPROVED	DATE

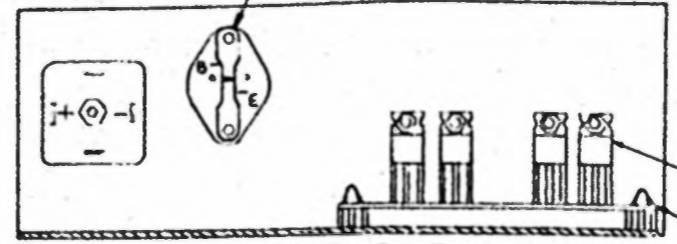
**SCHEMATIC
 VIDEO LOGIC BOARD**

SEE OTHER SHEET NO. 74111
 SCALE: NONE

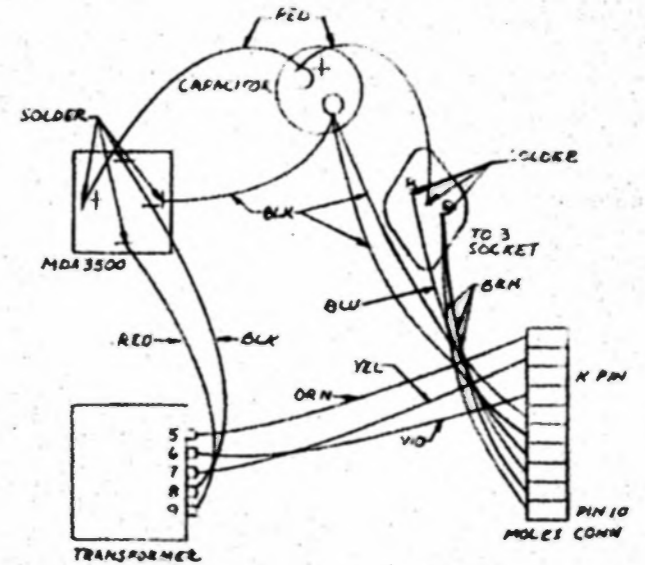
525-007



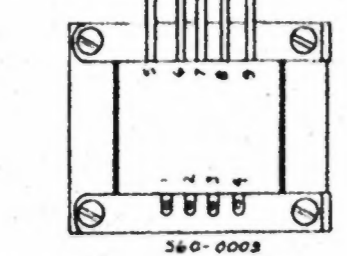
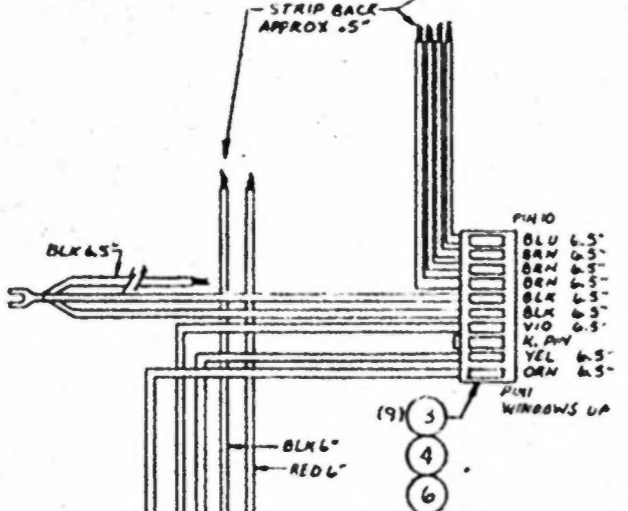
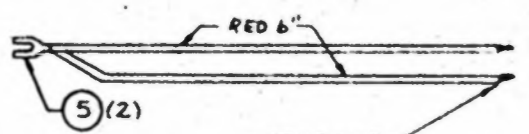
REV	DATE	DESCRIPTION	APPROVED



SEC A-A

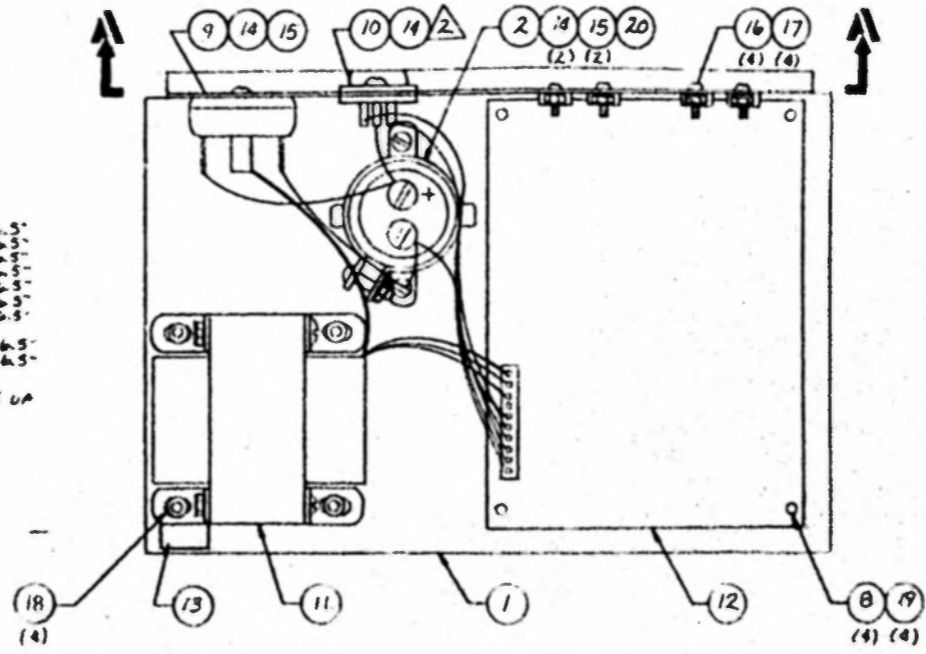


WIRING DIAGRAM



- PIN 10
- BLU 6.5"
- BRN 6.5"
- BRN 6.5"
- BRN 6.5"
- BLK 6.5"
- BLK 6.5"
- YIO 6.5"
- K, PW
- YEL 6.5"
- ORN 6.5"

- (19) 5
- 4
- 6

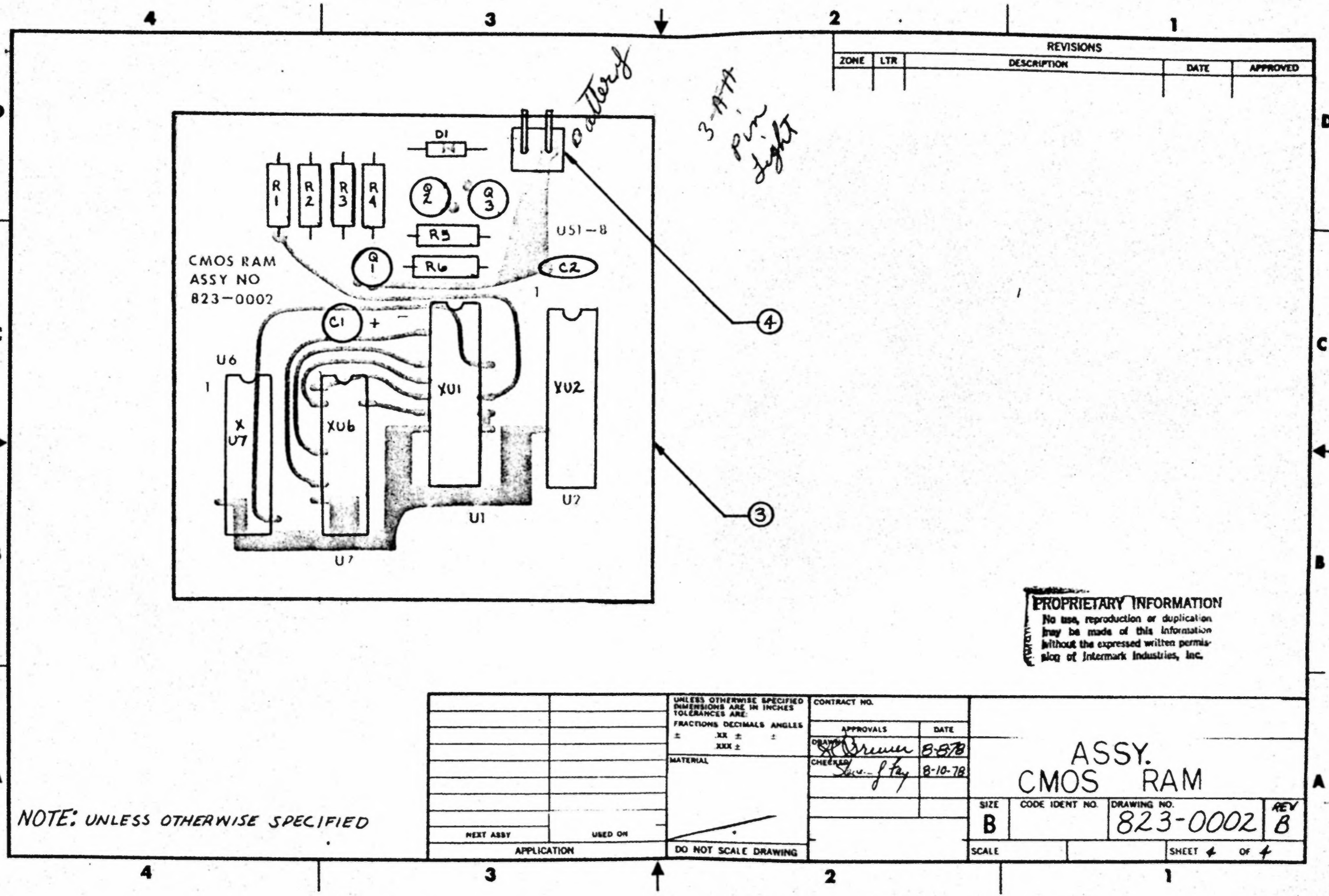


PROPRIETARY INFORMATION
 No use, reproduction or duplication may be made of this information without the expressed written permission of Intermark Industries, Inc.

1 ALL POWER TRANSISTORS TO BE MOUNTED WITH HEAT SINKING PASTE & INSULATING HARDWARE ALL WIRE TO BE AWG #22
 NOTES: UNLESS OTHERWISE SPECIFIED

QTY	CODE	PART OR IDENTIFYING NO.	NOMENCLATURE OR DESCRIPTION
PARTS LIST			
UNLESS OTHERWISE SPECIFIED DIMENSIONS ARE IN INCHES TOLERANCES ARE FRACTIONS DECIMALS ANGLES		CONTRACT NO.	
MATERIAL		APPROVED	DATE
FINISH		CREATED	7-1-73
HEAT SINK USED ON APPLICATION		ASSY POWER SUPPLY	
DO NOT SCALE DRAWING		REV	A
SCALE		823-0004	1
THICK 2 OF 3			

823-0004 A



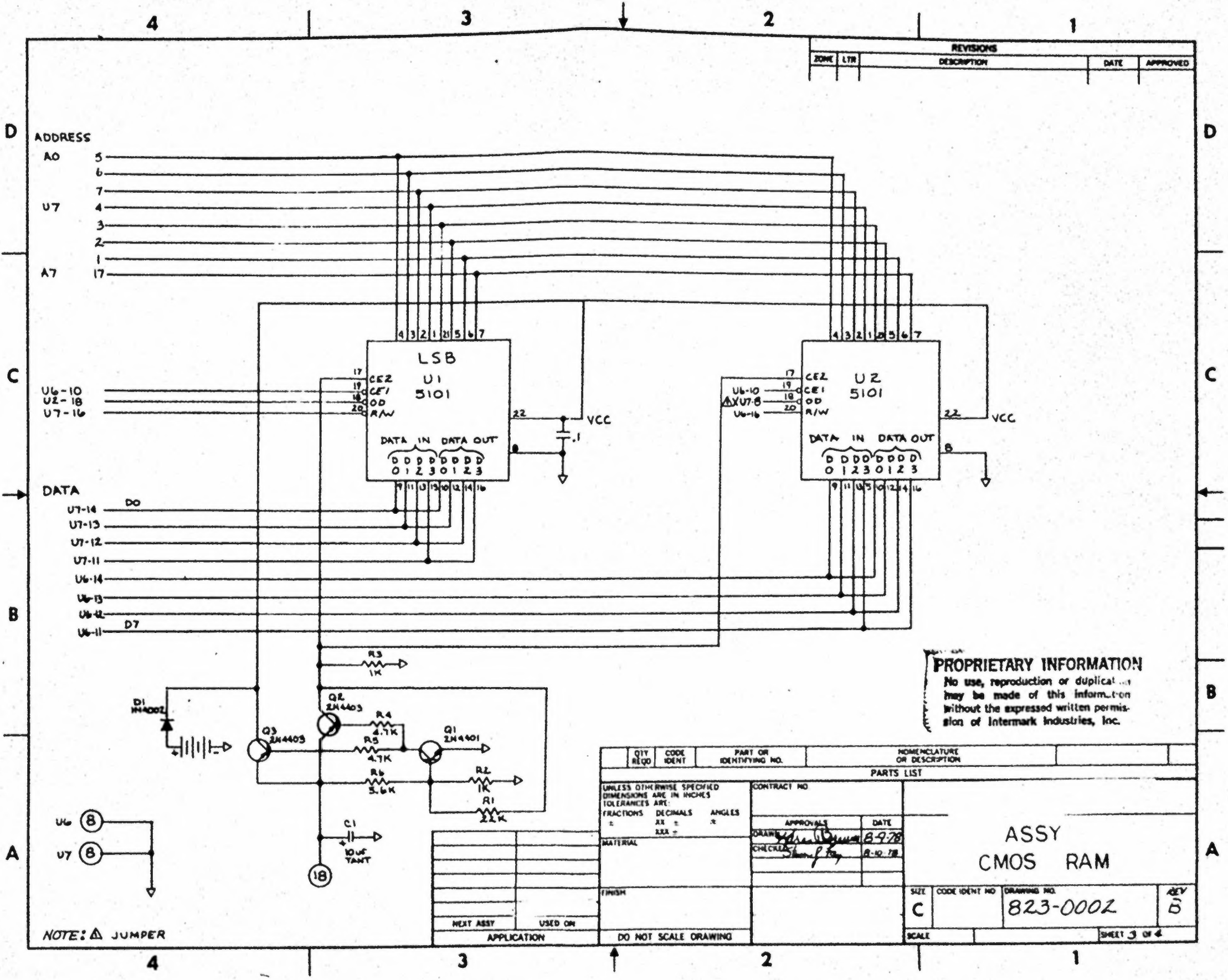
REVISIONS				
ZONE	LTR	DESCRIPTION	DATE	APPROVED

CMOS RAM
ASSY NO
823-0002

PROPRIETARY INFORMATION
No use, reproduction or duplication
may be made of this information
without the expressed written permis-
sion of Intermark Industries, Inc.

NOTE: UNLESS OTHERWISE SPECIFIED

UNLESS OTHERWISE SPECIFIED DIMENSIONS ARE IN INCHES TOLERANCES ARE:		CONTRACT NO.	
FRACTIONS DECIMALS ANGLES ± .XX ± ±		APPROVALS	DATE
MATERIAL		<i>B. B. B.</i>	8-10-78
NEXT ASSY		CHECKED	<i>J. J. J.</i>
USED ON		ASSY. CMOS RAM	
APPLICATION		SIZE	CODE IDENT NO. DRAWING NO. REV
DO NOT SCALE DRAWING		B	823-0002 B
		SCALE	SHEET 4 OF 4



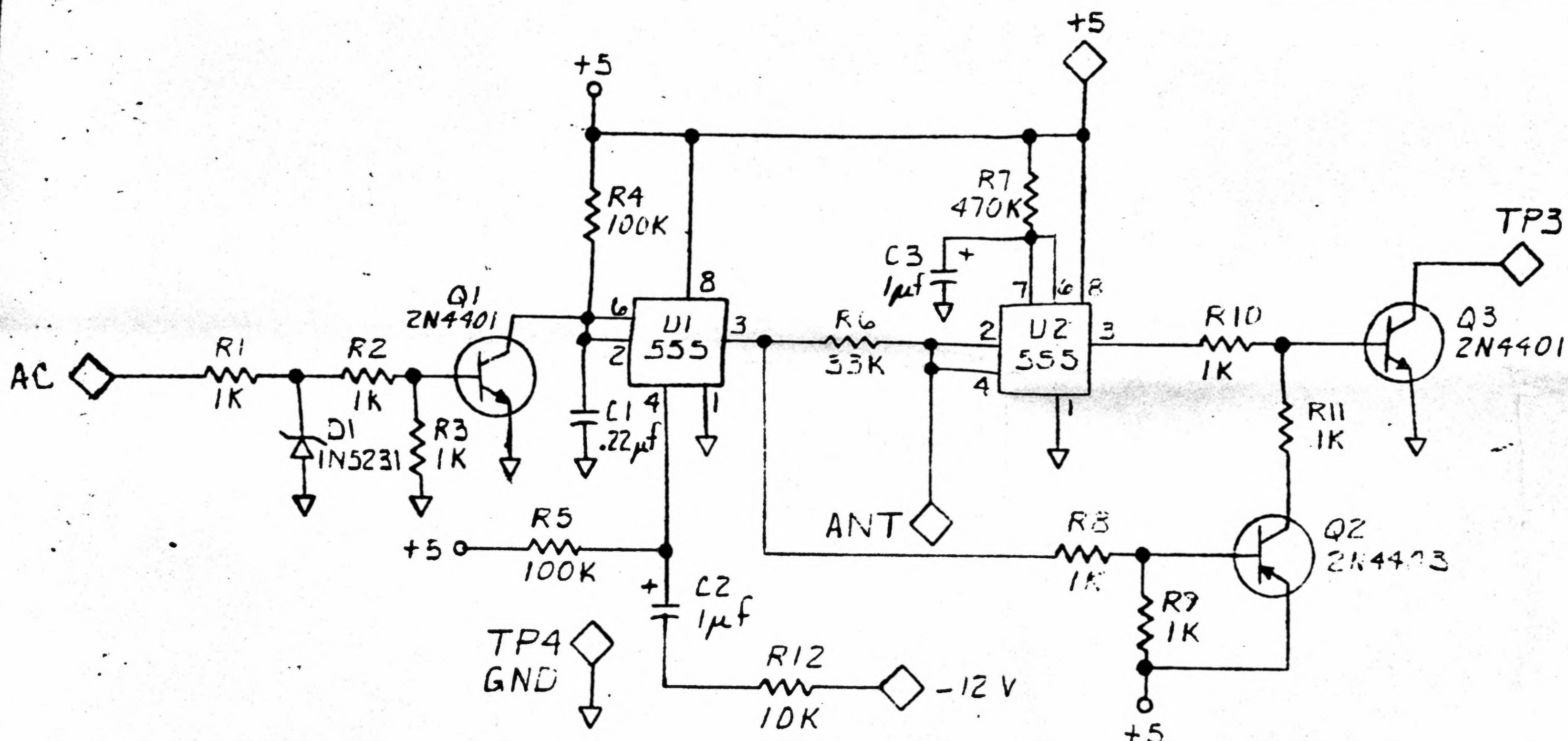
REVISIONS				
ZONE	LTR	DESCRIPTION	DATE	APPROVED

PROPRIETARY INFORMATION
 No use, reproduction or duplication may be made of this information without the expressed written permission of Intermark Industries, Inc.

QTY REQD	CODE IDENT	PART OR IDENTIFYING NO.	NOMENCLATURE OR DESCRIPTION
PARTS LIST			
UNLESS OTHERWISE SPECIFIED DIMENSIONS ARE IN INCHES TOLERANCES ARE:		CONTRACT NO	
FRACTIONS	DECIMALS	ANGLES	
±	±	±	
XXX	±	±	
MATERIAL		APPROVALS	DATE
			8-9-78
FINISH		CHECKED	DATE
			8-10-78
NEXT ASSY		ASSY CMOS RAM	
USED ON		SIZE	CODE IDENT NO
		C	823-0002
APPLICATION		DRAWING NO.	REV
			B
DO NOT SCALE DRAWING		SCALE	SHEET 3 OF 4

NOTE: Δ JUMPER

REVISIONS				
ZONE	LTR	DESCRIPTION	DATE	APPROVED
	A	PEF ECN-131	7-21-77	<i>[Signature]</i>



UNLESS OTHERWISE SPECIFIED DIMENSIONS ARE IN INCHES TOLERANCES ARE: FRACTIONS DECIMALS ANGLES ± .XX ± .XXX ±		CONTRACT NO.		GREMLIN INDUSTRIES INC. 8401 AERO DR. SAN DIEGO, CA. 92123	
MATERIAL		APPROVALS	DATE	SCHEMATIC — POWER INTERRUPT	
FINISH		<i>[Signature]</i>	12/27/76	SIZE	CODE IDENT NO.
NEXT ASSY		<i>[Signature]</i>	36/7/78	B	DRAWING NO.
USED ON				807-0012 B	
APPLICATION		DO NOT SCALE DRAWING		SCALE	SHEET 2 OF 2
				NONE	

