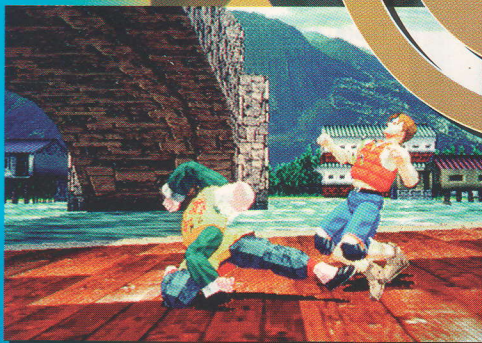


A TECHNICAL KNOCKOUT!

2



VIRTUA FIGHTER



- 300,000 POLYGONS PER SECOND

- 2 NEW FIGHTERS

- ALL NEW ARENAS

- TEXTURE-MAPPED GRAPHICS FOR

EVEN MORE REALISTIC ANIMATION

- 500 NEW MOVES

- 60 FRAMES PER SECOND

SEGATM
COMES OUT FIGHTING!

SEGA ENTERPRISES, INC. (USA) • 275 SHORELINE DRIVE, SUITE 201 • REDWOOD CITY, CA 94065
(415) 802.3100 • FAX (415) 802.3120



V I R T U A F I G H T E R 2



GAME FEATURES INCLUDE

- 3 Levels of Difficulty
- 3 Game Play Modes
- Viable Coin-Op & Buy-In Settings
- 6 Way Speaker System with 5 Band Graphic Equalizer
- Bill Acceptor Ready
- High Resolution Monitor

Virtua Fighter 2 uses Sega's new Model 2 Hardware System and cranks out an unprecedented 300,000 polygons-per-second of pure simulation. The realism of swift kicks and punches between characters will make you wince as you project yourself into brand new fighting arenas with two new fighting characters, texture mapped graphics, 60 frames per second, and 500 butt-kicking special moves never seen before in VF1.

Each fighter will amaze you. You'll still see all your favorites from VF1 plus two new characters, Lau, a fifteen year old fighting phenomenon and Shun, the swaggering, seemingly drunk octogenarian.

As you battle your opponent for the best of 3 matches, be sure to use enough strategy to stay on the fighting platform or else lose the match.

There are 10 new fighting arenas and state-of-the-art, texture-mapped graphics guarantee a fighting platform so real, you'll think you've been pushed into the battle pit yourself.

Your excitement will grow each time you discover a new combination, all of which are incredibly animated.

Virtua Fighter 2 uses an eight-way joystick and three buttons (Kick, Punch, Defense) to control your character completely, giving you the smoothest motions ever seen in a fighting game.

VF2. A technical knockout!

Specifications

Virtua Fighters 2™

Shipping Dimensions (Boxed)
 Width.....43.0 in.
 Depth.....32.0 in.
 Height76.0 in.
 Weight370 lbs. (estimated)

Installation Dimensions (Unboxed)

Width40.25 in.
 Depth29.75 in.
 Height73.25 in.
 Weight300 lbs (estimated)

Design and specifications subject to change without notice.

Distributed By:



SEGA Enterprises, Inc. (USA)
 275 Shoreline Drive, Suite 201
 Redwood City, CA 94065
 Phone: (415) 802-3100
 FAX: (415) 802-3120